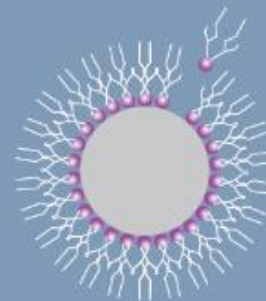


**taco** | Automatic Nucleic Acid  
Extraction System



# A Lifestyle of Simplicity

---

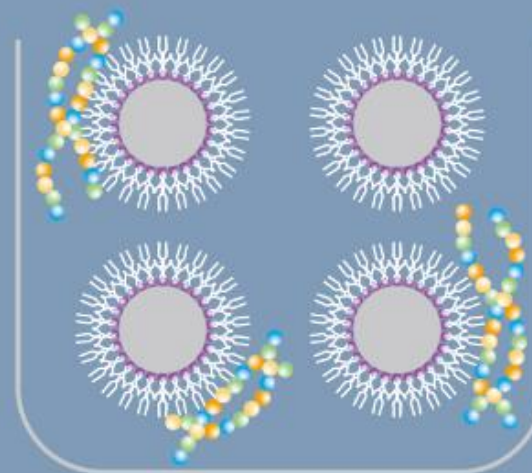


Magnetic beads are surface-modified to bind nucleic acids with high affinity.

The **tac9** Automatic Nucleic Acid Extraction Systems (**tac9**, **tac9<sub>mini</sub>**) apply the advanced magnetic particle transfer technology to purify nucleic acids within 30 minutes\*. High quality nucleic acids from a wide range of sample materials are ready for immediate use in downstream applications.

There is no unnecessary parameter input. You simply press a single button to start. GeneReach's **tac9** and **tac9<sub>mini</sub>** will bring you a whole new experience of nucleic acid purification.

\*For **tac9<sub>mini</sub>**

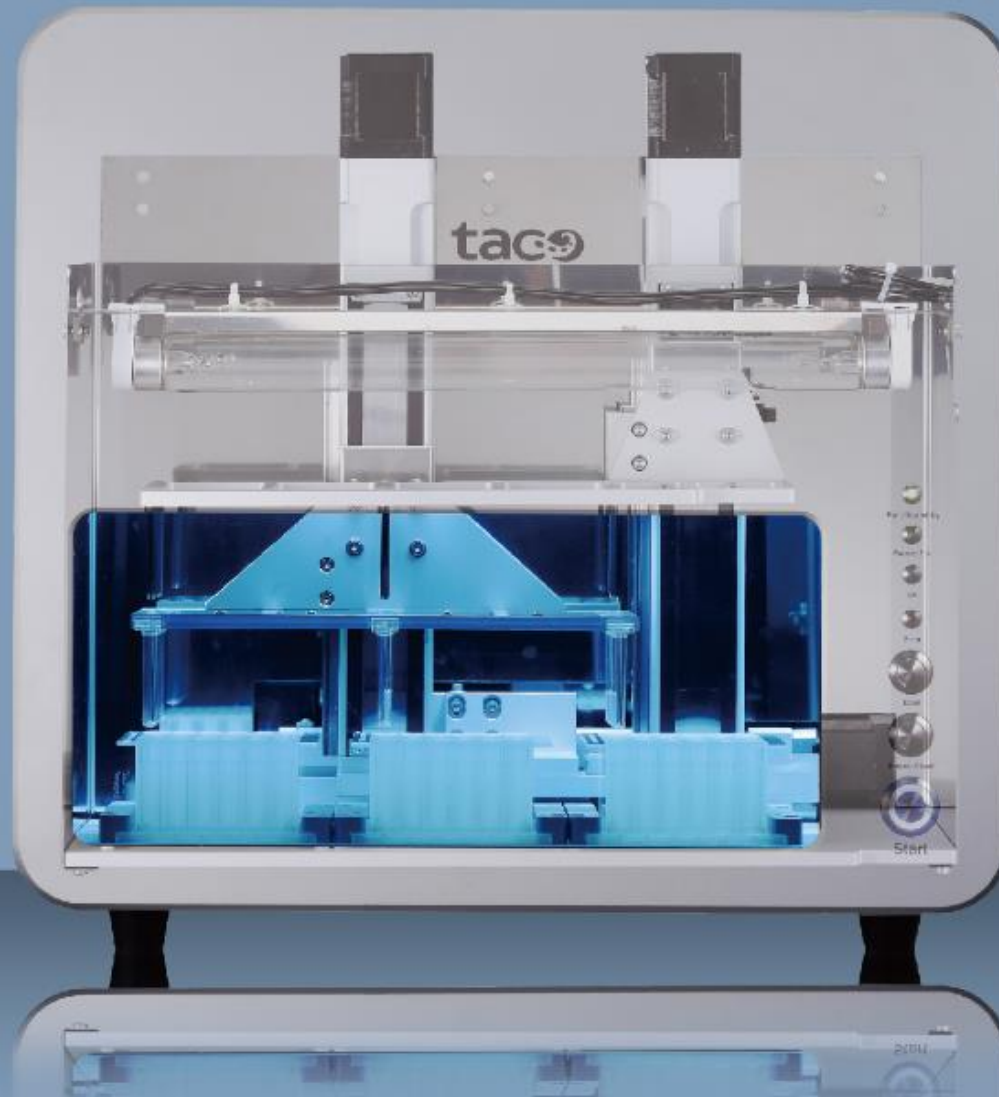


taco



- Run/Stand by
- Pause/Load
- UV
- Error
- Door
- Pause/Reset
- Start

# Capabilities with Elegance



## Versatile

---

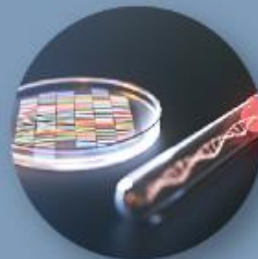
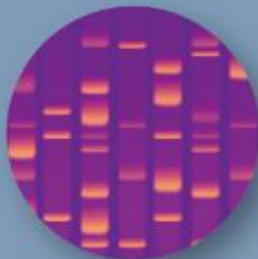
**taco** systems can be applied to purify DNA/RNA from various sample materials such as serum, buffy coat, whole blood, and urine.



## Flexible

---

Purified DNA/RNA can be used for a wide range of applications, such as molecular diagnostics, genetic identity testing, biomedical researches, and gene expression analysis.





# Proven Quality from State-of-the-Art Technology

## High Quality

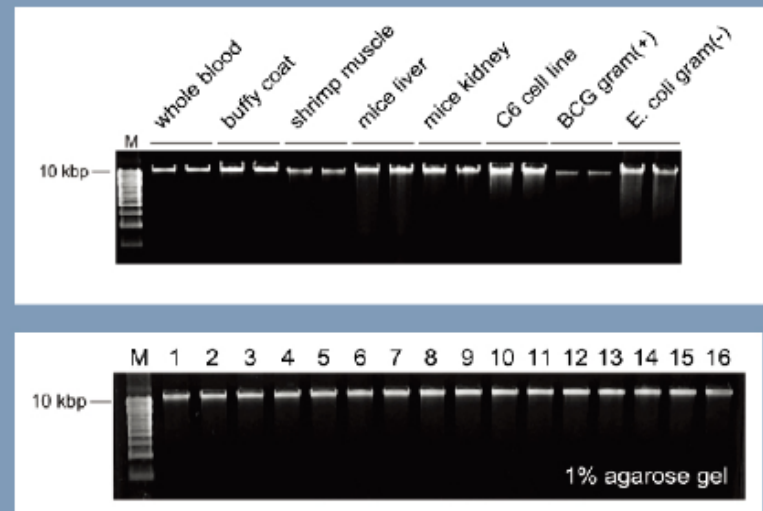
CE IVD certified and Taiwan FDA approved.

## Intact

DNA extracted from different sample types remains intact after the **taco** extraction procedure.

## Consistent

Similar yield and quality were obtained for all wells tested using the same whole blood sample.



# Preloaded and Ready-to-use Reagents

The **tac9** preloaded reagents eliminate the complexity of liquid handling, and require less than 5-minute hands-on time for efficient nucleic acid extraction.

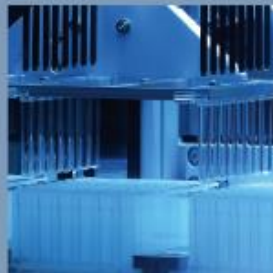
## Yield from the **tac9** System

Sample Type	Sample Size	Yield	A 260/280
Whole blood	200 $\mu$ l	> 30 ng/ $\mu$ l	1.6~2.0
Animal tissue	50 mg	> 30 ng/ $\mu$ l	1.6~2.0
Mouse liver / kidney	50 mg	> 133 ng/ $\mu$ l	1.6~2.0
C6 cell line	$1 \times 10^5$	> 100 ng/ $\mu$ l	1.6~2.0
Gram positive bacteria	$1 \times 10^9$	> 10 ng/ $\mu$ l	1.6~2.0
Gram negative bacteria	$1 \times 10^9$	> 30 ng/ $\mu$ l	1.6~2.0



# Safe and Simple by Human Factors Engineering

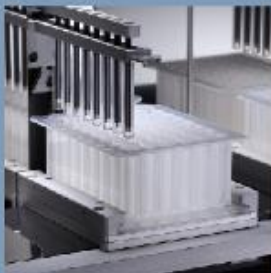
---



## Compact

---

- Light weight and small footprint
- Benchtop design, perfect for laminar hood



## Simple

---

- One touch to start
- No programming
- LED status indication





## Free of Contamination

---

- Built-in UV lamp for decontamination\*
  - Disposable plastics for single use
- \*For taco™ only.

## Safe

---

- Alarm for improper use
- Designed to minimize contact with potentially infectious samples



## taco

Throughput	24
Dimensions (W x D x H)	42 cm x 30 cm x 38 cm
Weight	Approx. 23.4 kg
Run time	Within 50 minutes
Power input	100-120V/200-240V AC, 50/60 Hz, 2A
UV Lamp	4W

CE IVD Kits

**taco** Total DNA, DNA/RNA,  
Preloaded DNA/RNA

Consumables

**taco** plate and comb

Kits for research use

**taco** Total DNA, DNA/RNA,  
Preloaded DNA/RNA,  
and Plant DNA/RNA

## tac9 mini

Throughput	8
Dimensions (W x D x H)	30 cm x 26.5 cm x 26 cm
Weight	Approx. 5.5 kg
Run time	Within 30 minutes
Power Input	100-120V/200-240V AC, 50/60 Hz, 2A
UV Lamp	N/A

CE IVD Kits

**tac9** Total DNA, DNA/RNA,  
Preloaded DNA/RNA

Consumables

**tac9** plate and comb

Kits for research use

**tac9** Total DNA, DNA/RNA,  
Preloaded DNA/RNA,  
and Plant DNA/RNA



**taco** | Automatic Nucleic Acid  
Extraction System

**GeneReach Biotechnology Corp.**

ISO 13485. ISO 17025. GMP compliant.

[www.genereach.com](http://www.genereach.com)

1800-taco