



BERST DRUCK TESTER 2026

The **Burst Tester** is a Hydraulic Burst Tester designed for customers in the field of development and production of angioplasty catheters. The control system gives the opportunity to choose different pressure cycles for products with specific requirements, and store these as a dataset. The machine delivers pressurized distilled water and can perform the following tests:

Burst Test: Pressure is built up continuously to the burst pressure.

Compliance Test: Pressure is built up in steps.

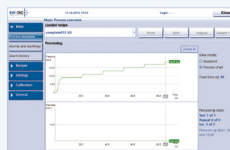
Multiple Inflation Test: A building up of the same pressure occurs repeatedly.



Measuring Gauge



Luer-Lock Connection



BW-TEC HMI

Technical Specifications

- test pressure: 0 – 50 bar (0 – 5.0 MPa)
- H₂O as pressure medium
- tolerance: +/- 0.1 bar (0.01 MPa)
- 0.001 mm Mitutoyo measuring gauge
- connection luer-lock (male)
- bottle for distilled water
- simple user interface with BW-TEC HMI on touchscreen
- PLC controller and tablet-PC for HMI and data management, network compatible
- dimensions (L x W x H): 700 x 300 x 300 mm
- weight: 25 kg
- power: 115/230 VAC, 400 W