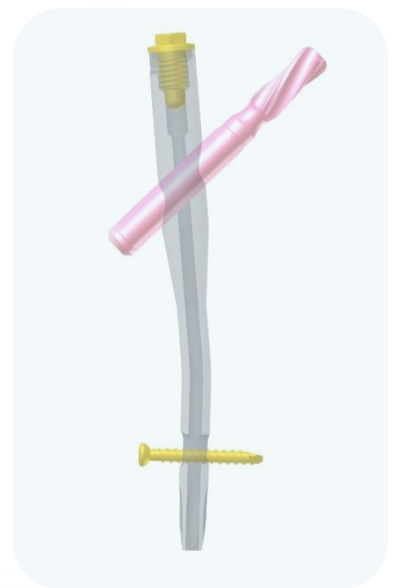


EVEREST™

Trochanteric Fixation Nailing (TFN) System



INTRODUCTION

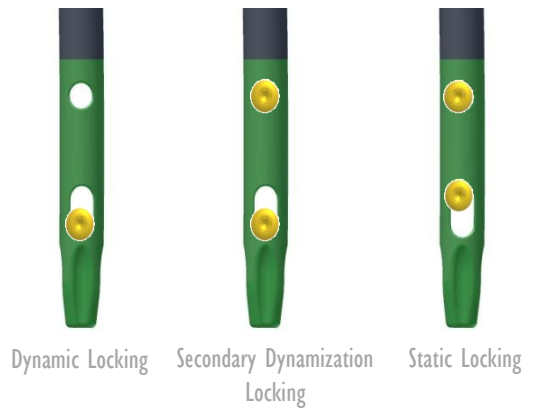
EVEREST™ Trochanteric Fixation Nailing (TFN) System is designed to treat unstable, comminuted, proximal fractures of the femur, specifically, the intertrochanteric and subtrochanteric regions. The Lag Screw design offers superior cutting behavior during Lag Screw insertion, providing extremely low insertion torque. The Locking Blade design offers excellent grip in the cancellous bone of the femoral head and strong resistance against cut-out. The EVEREST™ design is truly versatile in offering the combined features of intramedullary nail and hip screw systems.

Features and Benefits

- **Anatomical nail design guarantees an optimal fit in the femur**
 - The nail is cannulated for Guide-Wire-controlled insertion and features a conical tip.
 - Two different target angles [130°, 135°] are available for Lag Screw and Locking Blade entry to accommodate variations in femoral neck anatomy.
- **Static and dynamic distal locking options for clinical choice**
- **Better stability in anchoring and anti-rotation**
 - The Lag Screw features a rounded profile at its tip and a self-tapping thread designed for easy insertion.
 - Inserting the large surface Locking Blade compacts the cancellous bone providing additional anchoring, which is especially important in osteoporotic bone.



Distal Locking Options for Long Trochanteric Nail



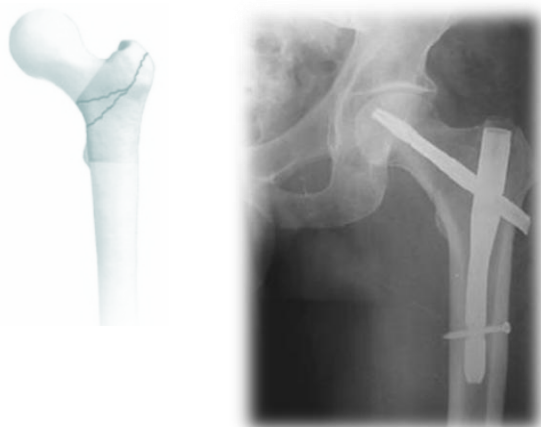
Distal Locking Options _ Long Trochanteric Nail



Indications

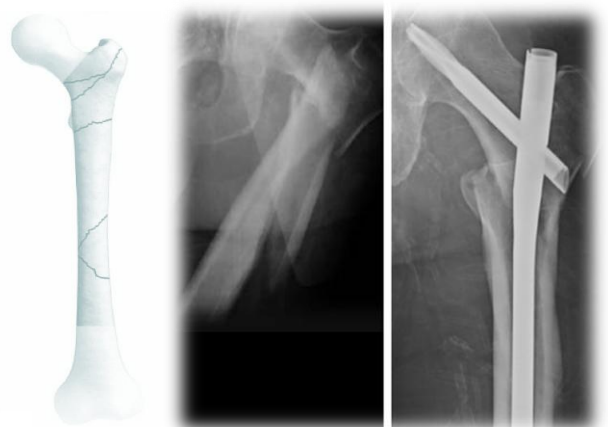
The indications for the EVEREST™ Short Trochanteric Nail.

- ◆ Intertrochanteric fractures
- ◆ Pertrochanteric fractures
- ◆ Nonunion and malunion



The indications for the EVEREST™ Long Trochanteric Nail.

- ◆ Subtrochanteric fractures
- ◆ Pertrochanteric fractures associated with shaft fractures
- ◆ Pathological fractures (including prophylactic use) in both trochanteric and Diaphysal areas
- ◆ Nonunion and malunion



IMPLANT INFORMATION

End Cap



REF (TIT)	LEN (mm)
MOI 31706000	0
MOI 31706005	5
MOI 31706010	10
MOI 31706015	15

Fixing Screw



REF (TIT)	LEN (mm)
MOI 31712017	17

Lag Screw 10.0 mm



REF (TIT)	DIA (mm)	LEN (mm)
MOI 31524070	10.0	70
MOI 31524075	10.0	75
MOI 31524080	10.0	80
MOI 31524085	10.0	85
MOI 31524090	10.0	90
MOI 31524095	10.0	95
MOI 31524100	10.0	100
MOI 31524105	10.0	105
MOI 31524110	10.0	110
MOI 31524115	10.0	115
MOI 31524120	10.0	120

Locking Blade 10.0 mm



REF (TIT)	DIA (mm)	LEN (mm)
MOI 31508080	10.0	80
MOI 31508085	10.0	85
MOI 31508090	10.0	90
MOI 31508095	10.0	95
MOI 31508100	10.0	100
MOI 31508105	10.0	105
MOI 31508110	10.0	110
MOI 31508115	10.0	115
MOI 31508120	10.0	120

Long Trochanteric Nail, LEFT (Cannulated)



REF (TIT)	NECK ANGLE	DIA (mm)	LEN (mm)
MOI 31355320	130°	16/11	320
MOI 31355340	130°	16/11	340
MOI 31355360	130°	16/11	360
MOI 31355380	130°	16/11	380
MOI 31355400	130°	16/11	400
MOI 31355420	130°	16/11	420
MOI 31355440	130°	16/11	440
MOI 31356320	135°	16/11	320
MOI 31356340	135°	16/11	340
MOI 31356360	135°	16/11	360
MOI 31356380	135°	16/11	380
MOI 31356400	135°	16/11	400
MOI 31356420	135°	16/11	420
MOI 31356440	135°	16/11	440

Distal Locking Screw 5.0 mm



REF (TIT)	DIA (mm)	LEN (mm)
MOI 31509030	5.0	30
MOI 31509035	5.0	35
MOI 31509040	5.0	40
MOI 31509045	5.0	45
MOI 31509050	5.0	50
MOI 31509055	5.0	55
MOI 31509060	5.0	60
MOI 31509065	5.0	65
MOI 31509070	5.0	70
MOI 31509075	5.0	75
MOI 31509080	5.0	80

Nut for Condyle Screw 5.0 mm



REF (TIT)	LEN (mm)
MOI 31713017	17

Condyle Screw 5.0 mm



REF (TIT)	DIA (mm)	LEN (mm)
MOI 31525040	5.0	40
MOI 31525045	5.0	45
MOI 31525050	5.0	50
MOI 31525055	5.0	55
MOI 31525060	5.0	60
MOI 31525065	5.0	65
MOI 31525070	5.0	70
MOI 31525075	5.0	75
MOI 31525080	5.0	80
MOI 31525085	5.0	85
MOI 31525090	5.0	90
MOI 31525095	5.0	95
MOI 31525100	5.0	100

Long Trochanteric Nail, LEFT (Cannulated)



REF (TIT)	NECK ANGLE	DIA (mm)	LEN (mm)
MOI 31357320	130°	16/12	320
MOI 31357340	130°	16/12	340
MOI 31357360	130°	16/12	360
MOI 31357380	130°	16/12	380
MOI 31357400	130°	16/12	400
MOI 31357420	130°	16/12	420
MOI 31357440	130°	16/12	440
MOI 31358320	135°	16/12	320
MOI 31358340	135°	16/12	340
MOI 31358360	135°	16/12	360
MOI 31358380	135°	16/12	380
MOI 31358400	135°	16/12	400
MOI 31358420	135°	16/12	420
MOI 31358440	135°	16/12	440

Short Trochanteric Nail (Cannulated)



REF (TIT)	NECK ANGLE	DIA (mm)	LEN (mm)
MOI 31353180	130°	16/11	180
MOI 31354180	135°	16/11	180

Long Trochanteric Nail, RIGHT (Cannulated)



REF (TIT)	NECK ANGLE	DIA (mm)	LEN (mm)
MOI 31359320	130°	16/11	320
MOI 31359340	130°	16/11	340
MOI 31359360	130°	16/11	360
MOI 31359380	130°	16/11	380
MOI 31359400	130°	16/11	400
MOI 31359420	130°	16/11	420
MOI 31359440	130°	16/11	440
MOI 31360320	135°	16/11	320
MOI 31360340	135°	16/11	340
MOI 31360360	135°	16/11	360
MOI 31360380	135°	16/11	380
MOI 31360400	135°	16/11	400
MOI 31360420	135°	16/11	420
MOI 31360440	135°	16/11	440

Long Trochanteric Nail, RIGHT (Cannulated)



REF (TIT)	NECK ANGLE	DIA (mm)	LEN (mm)
MOI 31361320	130°	16/12	320
MOI 31361340	130°	16/12	340
MOI 31361360	130°	16/12	360
MOI 31361380	130°	16/12	380
MOI 31361400	130°	16/12	400
MOI 31361420	130°	16/12	420
MOI 31361440	130°	16/12	440
MOI 31362320	135°	16/12	320
MOI 31362340	135°	16/12	340
MOI 31362360	135°	16/12	360
MOI 31362380	135°	16/12	380
MOI 31362400	135°	16/12	400
MOI 31362420	135°	16/12	420
MOI 31362440	135°	16/12	440