



Get to know
CUSTOMIZE



CUSTOMIZE

SOFTWARE FOR PATIENT
SPECIFIC MEDICAL DEVICES

Interact. Create. Supervise.
This is your platform.

Powered by



3D-SIDE

PATIENT SPECIFIC
TECHNOLOGY



Get to know 3D-Side

History

3D-Side is a Belgian company spin-off from the UCLouvain University, having developed first class products in cranioplasty and bone tumor surgery for more than 10 years. Based on this internal know-how, 3D-Side has developed a very specific vision on integrated surgical software.

Through this vision, an innovative platform named *Customize* has been developed for our own use connecting surgeons, patients, and medical device companies to optimize and streamline communication, creation and supervision of the production of patient-specific medical devices.

As of 2018, 3D-Side provides this in-house developed technology to external medical device companies.

Our mission

3D-Side S.A. is committed to provide an innovative platform connecting doctors, patients & medical companies permitting to communicate, create and supervise the production of patient-specific medical devices.

Our vision

Cover a large panel of surgical and medical applications
Become the must have platform software in surgery planning

Our expertise

3D-Side provides medical companies with **Customize**, a web platform to efficiently market custom made devices. From images to 3D printing, it consists of advanced tools for planning, communication with the medical team and manufacturing of patient specific medical devices (PSMD) :

Interact to communicate easily with doctors

Create to design custom-made instruments/implants

Supervise to manage quality and just-in-time manufacturing.

3D-Side: a software company. *Customize* has been built over years by the 3D-Side team for other medical companies. It is then fully customizable to our customer needs.

3D-Side: a medtech company. 3D-Side markets two major products based on our software, additive manufacturing technology and a strong knowledge in surgical field: custom cranial implants and patient-specific instruments (PSI) for complex bone surgery. Our team has an extended expertise in patient specific medical device design, technical files (EU/FDA), validations, ... We can assist you in on the technical and regulatory sides and also as OEM for the design of PSMD.

3D-Side: a medical 3D printing company. 3D-Side has an integrated manufacturing set-up for PSI. This ISO13485 workflow is available for our customers.



Customization challenges

How to get from batch to specific?

3D printing is more and more used in healthcare to personalize medical treatment for each patient. However, complexities remain in how to bring this latest 3D technology into the medical world. Patient-specific devices take time and challenges arise:



Communication with the medical team is essential to meet expectations



With patient-specific products, the **software** needs to be both adapted and automated to save time



Custom made medical devices imply just-in-time **production** and time-consuming **regulations** constraints

Those challenges in customization have shown that, with those emerging 3D technologies, the industry must adapt the way of working by using a new generation of communication, design and production management tools.

Ready to tackle the challenges?

3D-Side has developed an in-house modular software solution: *Customize* is a scalable web-based platform medical companies can use to produce patient specific medical device. *Customize* assists you in every step of your workflow: from the medical image transfer to the just in time delivery of the dedicated device at the hospital.





Customize

With *Customize*, increase your output while saving time and money.

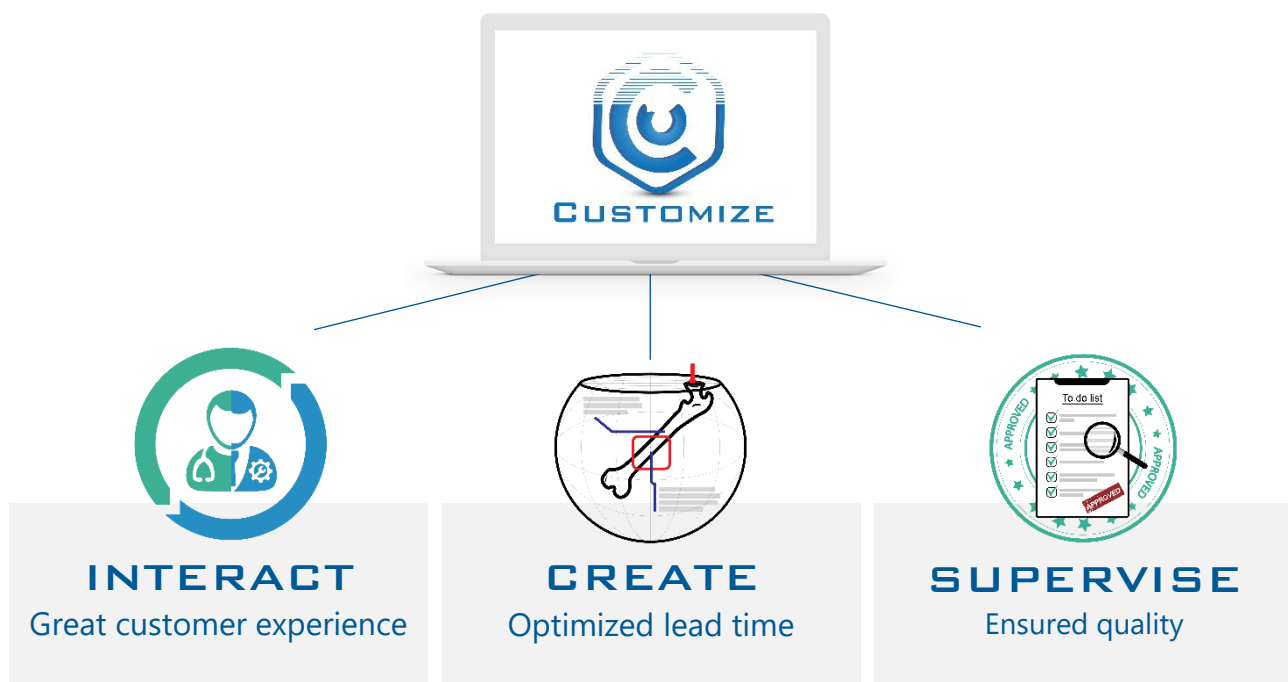
Customize platform integrates communication, design and production management tools, optimizing the entire process of 3D surgical planning and production of patient-specific medical devices. Its main goals: **interact** online with doctors, **create** custom-made devices & automate it with Artificial Intelligence (AI), and **supervise** the global custom process.

And the result is impressive: **zero waste of time** in communication, **lead times reduced** up to 10 times, and a **100% automatic traceability** to meet regulations' requirements.

Customize is not a "one-size-fits-all" solution but customizable to fit each customer's needs. **Each platform is unique and available online.** Each medical manufacturer receives one specific platform with their own branding, developed to fit their custom applications and gather all data, workflows & communication into one single online software.

***Customize* is a class IIa CE marked software for Europe and US-certified.**

Customize consists in **3 modular components**: *Interact*, *Create* and *Supervise*.





Module 1: InterACT – Customer Experience



Interact makes communication with medical team smoother and easier. It meets your customer's needs to visualize and adapt the patient-specific planning, anywhere and anytime from any device, and share it with their patients or fellow colleagues. It establishes a secure and efficient communication channel. Becoming your customer interface, it facilitates logistics & tracking to avoid wasting time while focusing on quality work.

Receive medical data

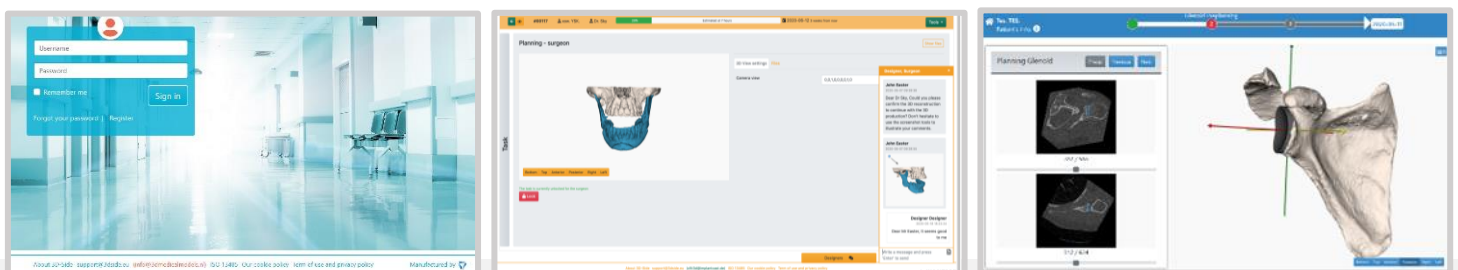
- Easily transfer patient's medical images on a secure webpage
- Gather all information (patient data, follow-up notes, ...) in one place

Communicate online

- Send and receive quick feedback (features: chat, annotations on 3D view, ...)
- Generate automatic case reports

Allow collaborative 3D planning

- Allow doctors to supervise the planning at any time
- Ask for expert advice or share a case directly with a fellow

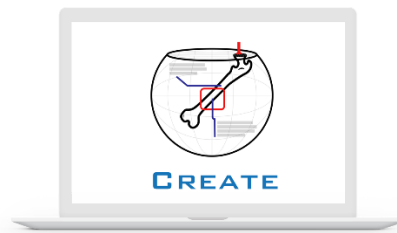


Create a great customer experience by establishing efficient communication channels & linking your customer with your design and production teams

0 BACK-AND-FORTH COMMUNICATION



Module 2: CreATE – Product Design



Create is a technical toolbox for engineers and surgeons willing to hands on the process. It has been developed to fit your application, with tweaked algorithms specifically developed for you.

2D: Image viewer, manual and semi-automatic segmentation, multi-modality matching.

3D: simulation, planning and meshes manipulation. Automated design can be implemented.

Segment medical images using Artificial Intelligence

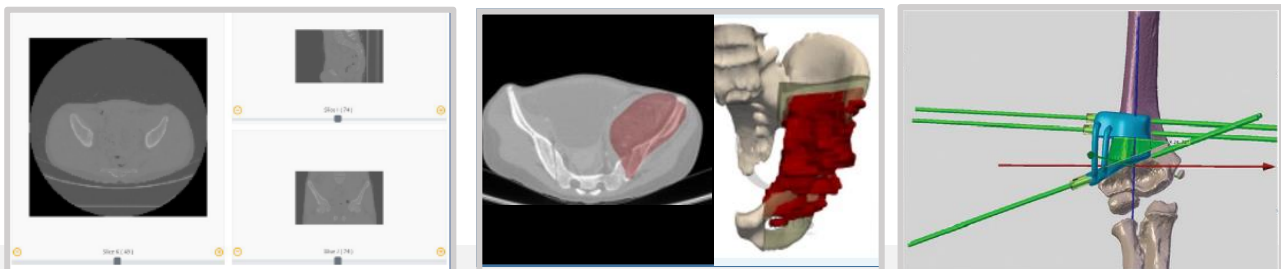
- Segment medical images by an intelligent detection of bony structures or by manual contour. Everything becomes possible.

Automate your process

- Match images with our MRI to CT matching algorithm.
- Automate the design by using algorithms specifically defined for your application to facilitate your design process (automatic measurements, mesh operations, labels, etc.).

Outsource your activities

- Benefit from 3D-Side engineering services for your product design and/or production.



Optimize your lead time by customizing your information and production flows

10 TIMES FASTER WITH CUSTOMIZE



Module 3: SuperVISE – Production & Traceability

Boost your Quality & ERP systems!



Supervise facilitates the quality management and your certification process by enabling a full traceability data and actions. *Supervise* ensures a just-in-time delivery by assisting the design & production management. It summarizes the patients and their status in the pipeline to monitor production deadlines and delivery times, acting as a Production ERP.

Facilitate quality management

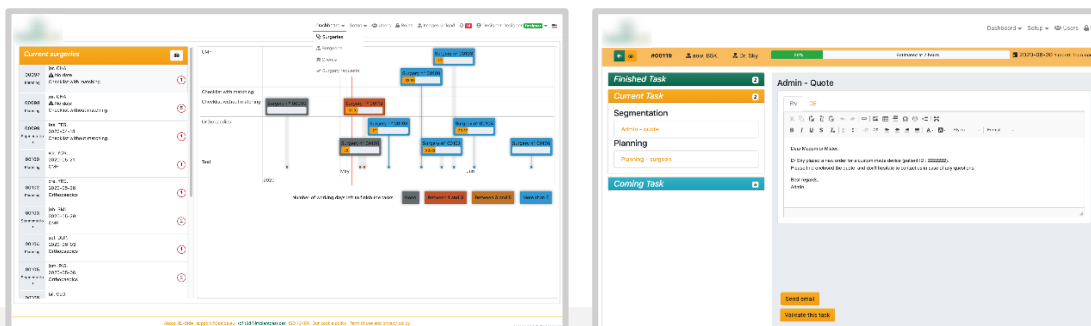
- Ensure data traceability & process reproducibility (easy ISO certification, CE Marking and FDA approval)
- Store administrative documents (QMS)
- Automatically generate emails, pdf reports, Device History Files, Labels

Preview your process

- Create your customized process & follow your to-do list
- Manage your workload and 3D production with personalized dashboards

Optimize the logistics

- Optimize your information and physical flows (e.g. inventory management)
- Follow up with your distributors and sales reps



Ensure quality by certifying a fully automatic traceability of your moves

100% AUTOMATIC TRACKING



Let's overcome your challenges

No more webmeetings or multiple back-and-forth emails, no more information loss or overdue tasks : *Customize* increases your outputs by **saving time** and **money** !

All the actors involved in your patient-specific medical devices can access and discuss all information at any time online:





Your *Customize* experience

With *Customize*, improve your communication, organization, and compliance. It is all you need to interconnect people and control all your processes and data.

Interact. Create. Supervise. *Customize* is your corporate platform, with one edition fitting your patient-specific activities:

- *Customize **Bronze*** is the **starter toolbox**, helping companies deal with communication and quality.
- *Customize **Gold*** is the **advanced toolbox**, with extra features such as segmentation and paperwork automation.
- *Customize **Platinum*** is **your complete toolbox** developed for your business, including collaborative planning and production management.

"*Customize* allows you to centralize everything on the same platform. All the information on medical devices is accessible and can be discussed by all the actors involved in the operation anywhere, anytime."

Laurent Paul
Co-Founder & Co-CEO

*Interact. Create. Supervise.
This is your platform.*



Get in touch

www.customize-3d-side.com/

info@3dside.eu

+32 10 81 35 48



CUSTOMIZE

SOFTWARE FOR PATIENT
SPECIFIC MEDICAL DEVICES

Powered by



3D-SIDE

PATIENT SPECIFIC
TECHNOLOGY