

A photograph of a dolphin leaping from the water, creating a large splash of white water against a deep blue background.

**Disease association typing –  
Discover our smart real-time assays**

FastQ B\*27 – M. Bechterew et al.

FastQ CD – Coeliac Disease

FastQ HFE – Hereditary Hemochromatosis

**RT-PCR direct  
from blood!**

# Your advantages

## Enjoy the convenient handling

- Efficient and flexible – set up any combination of tests with the liquid test mix and the same PCR program for different tests
- Save time – reduce the time and get the results in less than 80 minutes
- Keep hands on time to a minimum

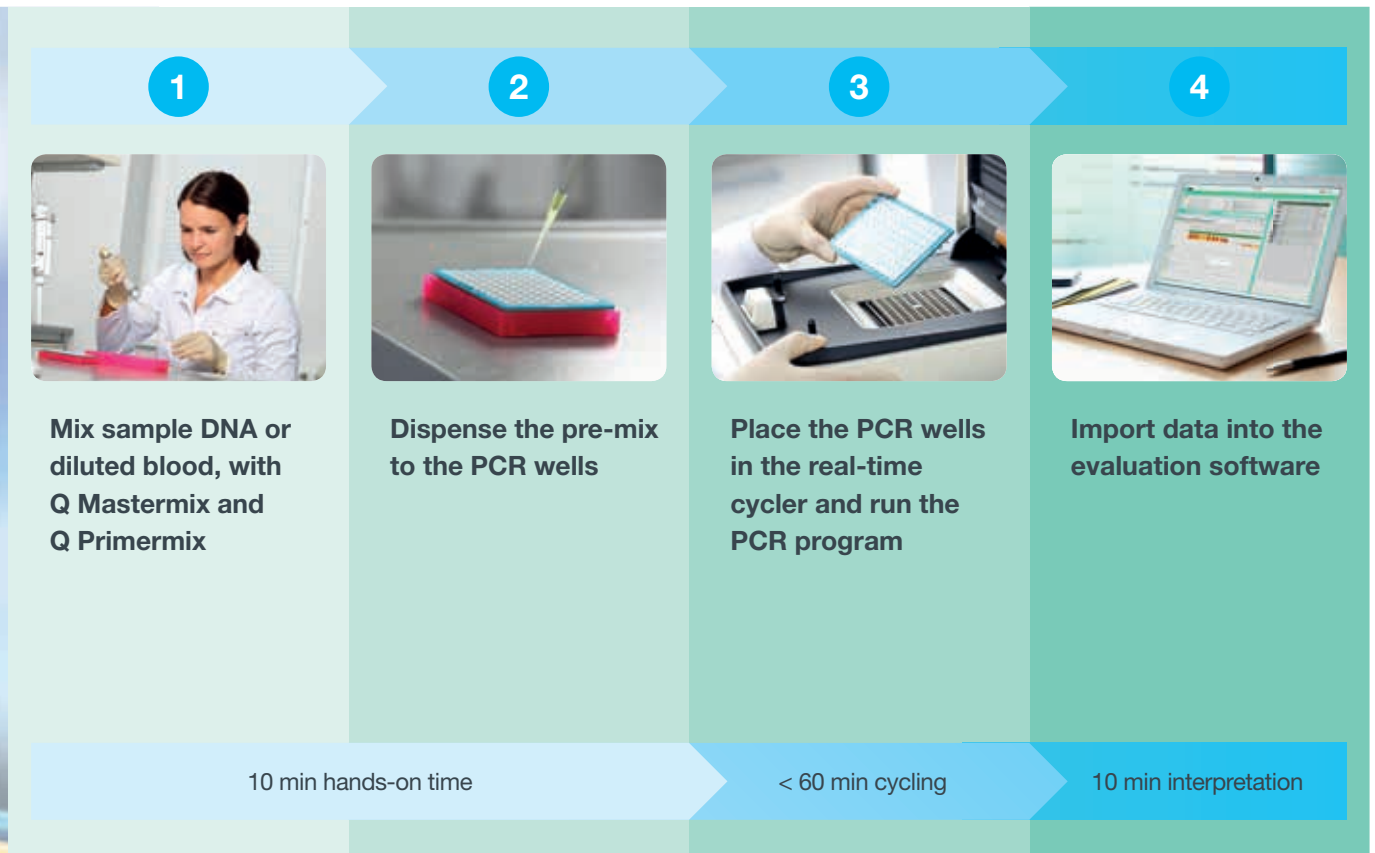
## Benefit from the easy implementation

- No extra purchases – the liquid format makes the test compatible with most real-time cyclers
- Ecological – no toxic waste

## Alternative: Type directly from blood

- Cost effective and time saving – no DNA isolation is needed
- Less waste

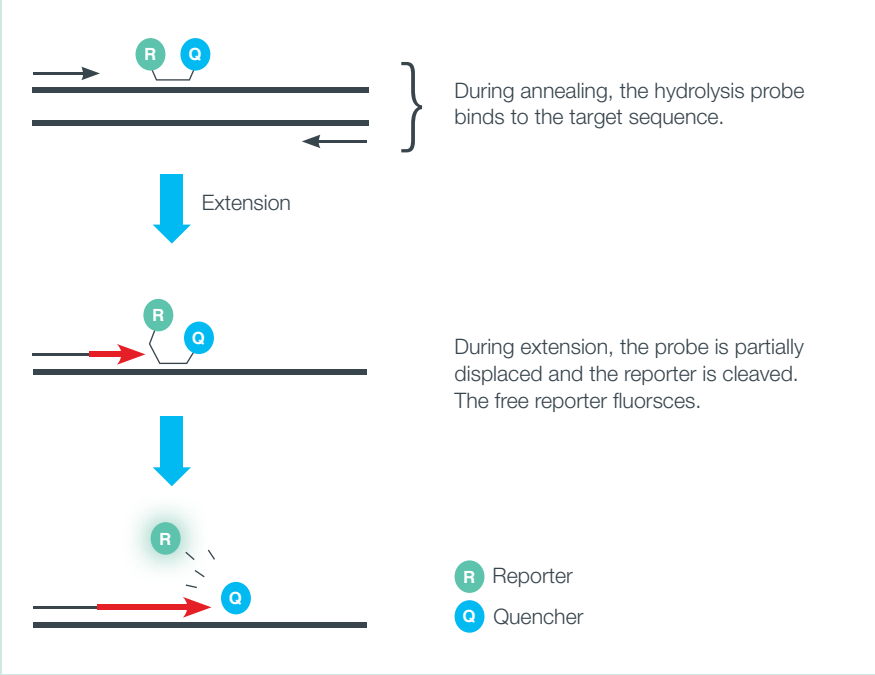
## Easy workflow



### Real-time cyclers

- CFX96 Touch™ real-time PCR Detection System (Bio-Rad)
- LightCycler®480 (Roche)
- BMS MIC-Cycler
- QuantStudio 6 Flex real-time PCR System (Thermo Fisher Scientific)
- Rotor-Gene Q (Qiagen)
- We help you with the validation of other real-time cyclers – just contact us

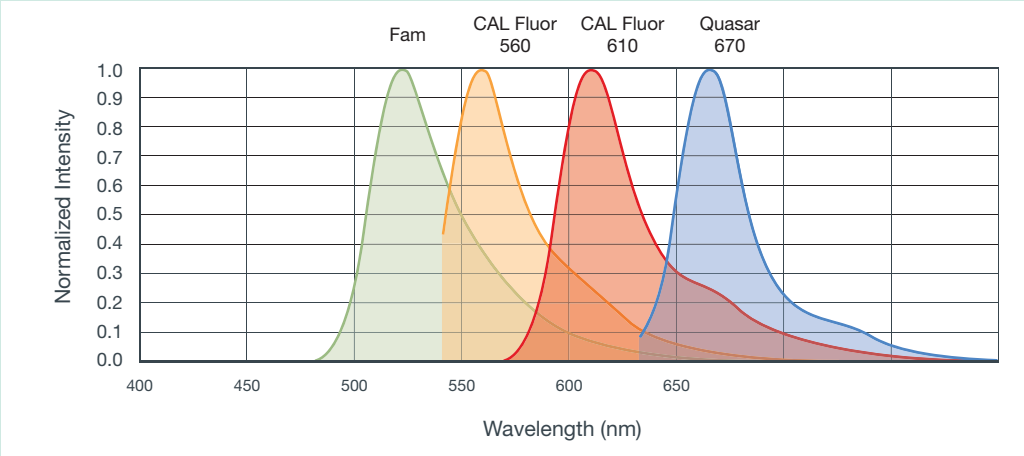
# High specificity with robust TaqMan® probes



**The specificity of the reaction is defined by the primer sequences as well as the probe sequence. This increases resolution and reduces false positive reactions**

**In a positive reaction the fluorescence increases with each cycle.**

## Colours with separated emission spectra were selected:



**Multiplexing 4 colours in one tube enables detection of up to three different alleles and the internal amplification control in one reaction mix.**

# FastQ B\*27 –

## Morbus Bechterew et al.

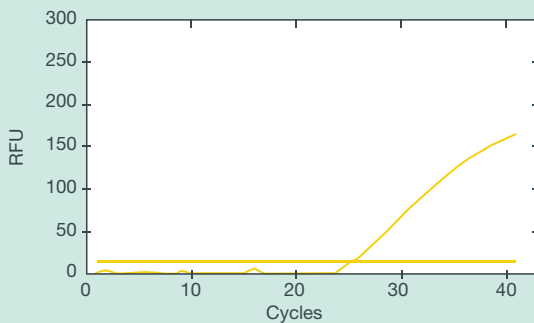
### Features

**Detects the HLA-B\*27 allele group associated with Morbus Bechterew, Morbus Reiter et al.**

- All common and well documented B\*27 alleles covered in one PCR mix
- Discrimination of the non-associated alleles (B\*27:06, B\*27:09) in FastQ B\*27
- Internal amplification control included
- Genomic DNA (FastQ B\*27) or whole blood / buffy coat (FastQ B\*27 direct) as sample material

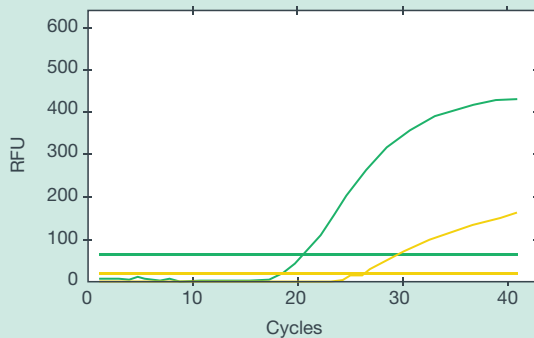
**Direct  
from blood**

### Results with FastQ B\*27



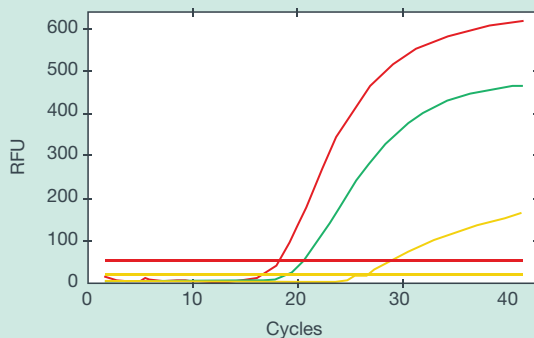
#### **B\*27 negative sample:**

Only the internal amplification control (yellow) is positive



#### **B\*27 positive sample (M. Bechterew associated allele):**

Internal control (yellow) and green channel B\*27 positive reaction (green)



#### **B\*27:06 / B\*27:09 positive (only for FastQ B\*27):**

In addition to the internal control and the B\*27 positive reaction there is a reaction specific for B\*27:06 / B\*27:09 (red)

# FastQ CD – Coeliac Disease

## Features

- **FastQ CD / CD direct** detects the relevant DQ alleles associated with coeliac disease in only two PCR mixes using four colours
- **FastQ CD plus / CD plus direct** enables the direct detection of DQB1\*03:01 and the determination of DQ2 homozygosity in only one additional mix
- Internal amplification control included
- Genomic DNA or whole blood / buffy coat as sample material

**Direct  
from blood**

### Coeliac Disease associated haplotypes:

	DQB1*	DQA1*	DRB1*
DQ2 cis	02:01	05:01	03
DQ2 trans	*03:01	05:05	11
	02:02	02:01	07
DQ8	03:02	03:01	04



Associated allele detected by **FastQ CD / CD direct**



Associated allele detected by **FastQ CD plus / CD plus direct**



Associated allele that does not need to be detected because it is present in linkage disequilibrium with the detected alleles

## Preview:

### Hereditary Hemochromatosis (HFE)

#### FastQ HFE / FastQ HFE direct

- Multiplex Real-Time PCR for hereditary hemochromatosis
- Detects the mutations H63D and C282Y for the HFE-Gen
- Most common congenital disease in Northern Europe

**Coming  
soon**

Contact us if you need additional markers to check if they could be added to the FastQ product line!

[www.bag-diagnostics.com](http://www.bag-diagnostics.com)

## Ordering Information

Product	Package	REF	Availability
FastQ B*27	96 tests	728208	Now!
FastQ B*27 direct	96 tests	728201	Q3 / 2020
FastQ CD	48 tests	728202	Q2 / 2020
FastQ CD direct	48 tests	728203	Q3 / 2020
FastQ CD plus	48 tests	728204	Q3 / 2020
FastQ CD plus direct	48 tests	728205	Q3 / 2020
FastQ HFE	48 tests	728206	Q2 / 2020
FastQ HFE direct	48 tests	728207	Q3 / 2020

## We are the experts for HLA and blood group diagnostics

With **more than 30 years of experience** BAG Diagnostics is the specialist for HLA and blood group diagnostics. As an independent, global operating company we offer **permanent ongoing development** of our products and services.

Our motivation is to **exceed the expectations of our customers** and partners. Hence, we support them with **extraordinary service** and **new ways of thinking – capable, fast and spot-on.**