



# Borrelia Diagnostics

## VIROTECH Borrelia ELISA

The antigen used is a mixture of the *B. afzelii* strain PKo recommended for Europe, the *B. garinii* strain PBr and the *B. burgdorferi* strain ZS7.

- All Borrelia ELISAs are **validated for CSF diagnostics**
- **User-friendly CSF analysis** software available
- VlsE *in vivo* expressed antigen is the second early marker in IgG besides OspC for the Lyme disease serology

Product	Order No.	Description
<b>VIROTECH Borrelia afzelii +VlsE IgG ELISA</b>	EC022G00 (Test Kit) EC022L60 (CSF Standards)	Increased diagnostic sensitivity through the additional <i>in vivo</i> antigen VlsE
<b>VIROTECH Borrelia afzelii IgM ELISA</b>	EC022M00 (Test Kit) EC022L80 (CSF Standards)	High sensitivity due to a strong OspC expressing <i>Borrelia afzelii</i> strain PKo
<b>VIROTECH B. afzelii + VlsE IgG Europe ELISA</b>	EC024G00 (Test Kit) EC022L60 (CSF Standards)	Increased specificity through special Cut off Setting

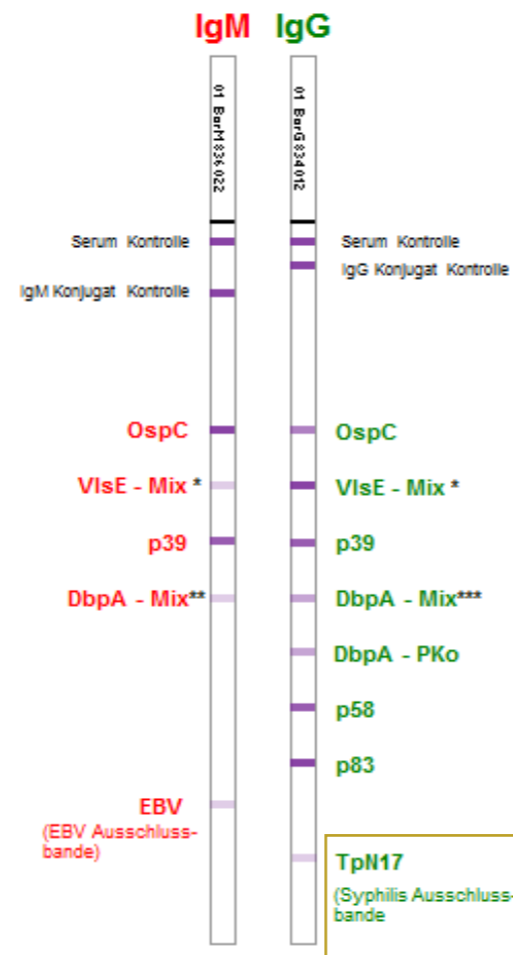
# Borrelia Diagnostics



## Borrelia Europe LINE Borrelia Europe + TpN17 Line

### Advantages

- Optimized **combination of native**, highly purified and **recombinant** *B. burgdorferi s.l.* antigens
- Antigen combination of all **important human pathogenic** genospecies, including ***B. spielmanii*** and ***B. bavariensis***
- Use of the national Reference Center (NRZ) published *B. bavariensis* (**PBi**)-**p58 Antigen**
- **DbpA** antigen combination of several Borrelia genospecies
- **VisE** of two genospecies
- **Exclusion marker for EBV primary infection**
- Additional **exclusion marker** for a **Syphilis infection** on the Borrelia Europe + TpN17 LINE
- Easy reading & interpretation, also with the **LabImage LA® software**



Additional syphilis exclusion marker on the Borrelia Europe + TpN17 LINE

(\*) *B. burgdorferi s.s.* (B31) and *B. garinii* (Ip90) (3)  
 (\*\*) *B. garinii* (PBr), *B. bavariensis* (PBi) (4), *B. spielmanii* (A14S) (1,2,3) and *B. afzelii* (PKo)  
 (\*\*\*) *B. garinii* (PBr), *B. bavariensis* (PBi) (4) and *B. spielmanii* (A14S) (1,2,3)

#### Literature:

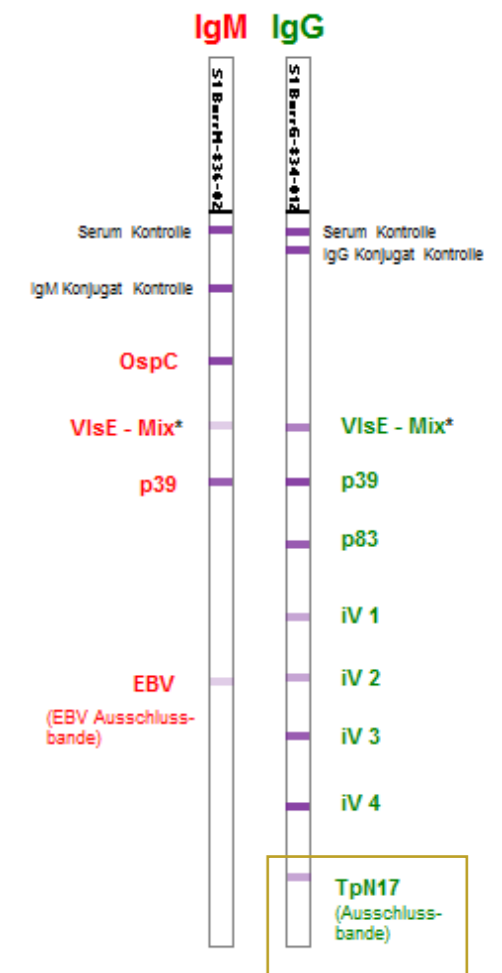
(1) Wilske, B. et al., Med. Microbiol. Immunol. (1999); 188: 139-144; (2) Schulte-Spechtel, U. et al., IJMM 296 (2006) S1, 250-266; (3) Goettner, G. et al., Journal of Clinical Microbiology, Aug. 2005, p. 3602-3609; (4) Schulte-Spechtel, U. et al., Journal of Clinical Microbiology, Mar. 2003, p. 1299-1303; (5) Margos G. et al., American Society for Microbiology June 2009



## Borrelia in vivo LINE Borrelia in vivo + TpN17 LINE

### Advantages

- Optimized **combination of native**, highly purified and **recombinant** *B. burgdorferi s.l.* antigens
- **VisE** of two genospecies
- **Exclusion marker for EBV primary infection**
- Additional **exclusion marker** for a **Syphilis infection** on the Borrelia *in vivo* + TpN17 LINE
- Easy reading & interpretation, also with the **LabImage LA® software**
- *In vivo* antigens **BBA36, BB0323, CRASP-3, pG** Exclusively at VIROTECH Diagnostics



Additional syphilis exclusion marker on the Borrelia *in vivo* + TpN17 LINE

(\*) *B. burgdorferi s.s.* (B31) and *B. garinii* (Ip90) (1)

#### Literature:

(1) Schulte-Spechtel, U. et al., Journal of Clinical Microbiology, Mar. 2003, p. 1299-1303

# Borrelia Diagnostics



## Borrelia Produkt Portfolio

Product / Format	Order No.
<b>VIROTECH Borrelia Europe IgG LINE</b> 32 / 96 IgG Tests	WE224G32 / WE224G96
<b>VIROTECH Borrelia Europe IgM LINE</b> 32 / 96 IgG Tests	WE224M32 / WE224M96
<b>VIROTECH Borrelia Europe + TpN17 IgG LINE</b> 32 / 96 IgG Tests	WE225G32 / WE225G96
<b>VIROTECH Borrelia <i>in vivo</i> IgG LINE</b> 32 / 96 IgG Tests	WE222G32 / WE222G96
<b>VIROTECH Borrelia <i>in vivo</i> IgM LINE</b> 32 / 96 IgG Tests	WE222M32 / WE222M96
<b>VIROTECH Borrelia <i>in vivo</i> + TpN17 IgG LINE</b> 32 / 96 IgG Tests	WE223G32 / WE223G96



### All VIROTECH Borrelia LINES are:

- MIQ 12/2017 conform
- Validated for CSF diagnostics

F-VT-Borrelia-En-01

## VIROTECH Diagnostics GmbH

Löwenplatz 5 65428 Rüsselsheim am Main +49 (0)6142 69090  
 +49 (0)6142 690919 info@virotechdiagnostics.com www.virotechdiagnostics.com

