

FAPON

A GLOBAL LEADING IVD REAGENT RAW MATERIALS AND ONE-STOP SOLUTIONS PROVIDER

Raw Material Catalogue for Tumor Markers



Fapon Biotech Inc.

Table of Contents

What are Tumor Markers?	02
Tumor Markers Overview	02
Pro-GRP	03
CYFRA211	05
CA242	07
CA724	09
CA153	11
SCCA	13
PGI/II	15
CA125	20
CA199	22
HE4	24
CA50	27
AFP	29
CEA	31
PSA	34

What are Tumor Markers?

A tumor marker (TM) is a substance secreted or discharged by cancer cells into body fluids or tissues, or a substance that is produced by a host in response to the presence of new organisms in the body that has entered body fluids or tissues. For clinical application, TMs refer to the relevant detectable substances in serum or other body fluids. Some TMs are absent from the normal human body, but present in embryos. Others are present at elevated levels in cancer patients as compared with those in the normal human body. Determination of the presence or level of TMs can aid the diagnosis of tumors and the analysis of the course of disease, provide guidance for treatment, and monitor recurrence or metastasis, as well as the determination of prognosis.

Tumor Markers Overview

Disease	Tumor Markers
Lung Cancer	CEA, CYFRA211 (NSCLC), Pro-GRP (SCLC)
Gastric Cancer	CA724, PGI/II
Colorectal Cancer	CEA, CA199, CA50
Pancreatic Cancer	CEA, CA199, CA242, CA50
Liver Cancer	AFP
Gynecologic Cancer (Ovarian & Cervical)	SCCA, CA125, HE4
Testicular Cancer	AFP
Prostate Cancer	PSA
Breast Cancer	CA153

Pro-GRP

Pro-GRP is highly sensitive and specific to small cell lung cancer (SCLC). As Pro-GRP is produced in very small (or zero) quantities in the presence of benign lesions and other cancers (including non-SCLCs), thus Pro-GRP detection is useful to apply in diagnosis and differential diagnosis.

When Pro-GRP immunoassay is applied to SCLC diagnosis, the patient's renal function must be examined to rule out elevated serum levels of Pro-GRP due to reduced glomerular filtration rates. Using in combination of renal dysfunction serum creatinine > 141 $\mu\text{mol/L}$, patient's Pro-GRP levels will be elevated.

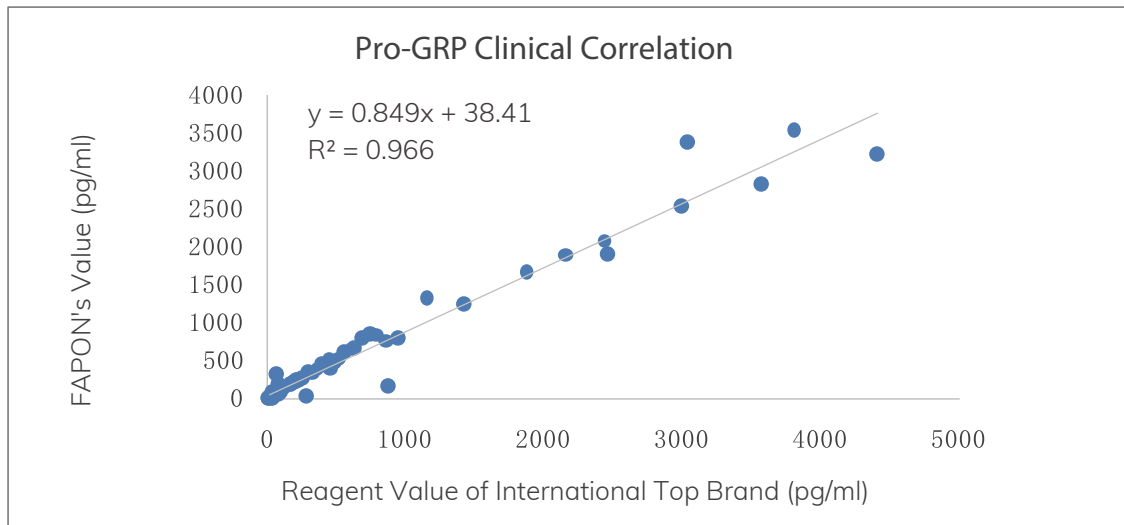
☆Pro-GRP Antibody

Antibody	BENGRPS101	BENGRPS102	BENGRPS103	BENGRPS104	BENGRPS105	BENGRPS106
Usage	Coating	Coating	Coating	Coating	Labeling	Coating
Subtype	IgG1	IgG1	IgG1	IgG1	IgG2a	IgG1
Buffer	10mM PB + 150mM NaCl + 0.1%Proclin300, pH7.4					
Storage Condition	-20°C±5°C					
Shelf Life	3 years					
Purity	≥90%					

☆Recommended Pairing

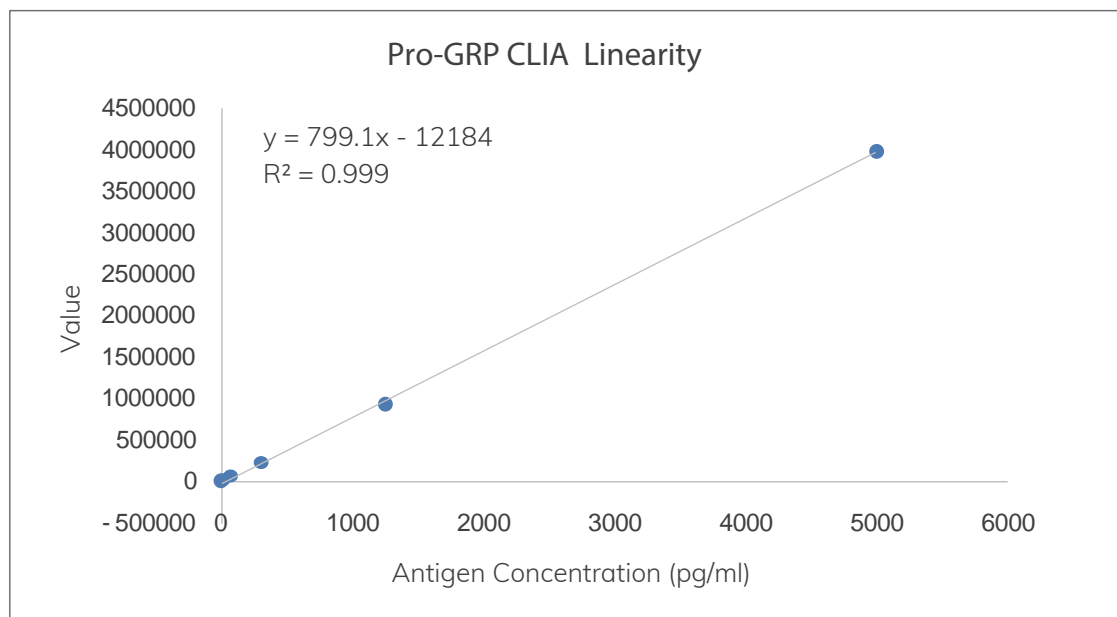
Catalog No.	Recommended Usage	Application Platform
BENGRPS104	Coating	ELISA/CLIA
BENGRPS105	Labeling	

☆Clinical Correlation



©Summary: There is an excellent clinical correlation between Fapon's Pro-GRP and the values of international top brand.

☆CLIA Linearity



©Summary: Fapon's Pro-GRP exhibits excellent linearity, with a linear range of 3-5000 pg/mL and R^2 up to 0.999.

☆Pairing Antigen

Catalog No.	GENGRPN101
Host	<i>E.coli</i>
Molecular Weight	18 kDa
Buffer Solution	25mM Tris-HCL, 0.1% SDS, pH8.0
Usage	For immune molecules or standards
Shelf Life	3 years

CYFRA211

With a sensitivity of 80%, CYFRA211 is utilized in the diagnosis of lung cancer, especially non-small cell lung cancer (NSCLC). CYFRA211 can be used for early diagnosis and is associated with tumor growth, patient survival rates, lymph node involvement, cancer staging, etc. Therefore, it can be used for disease progression detection and post-operative follow-ups. Serum CYFRA211 levels in lung cancer patients who have undergone chemotherapy are associated with treatment efficacy. Reduced CYFRA211 levels indicate better efficacy and stable conditions, whereas elevated levels indicate disease progression.

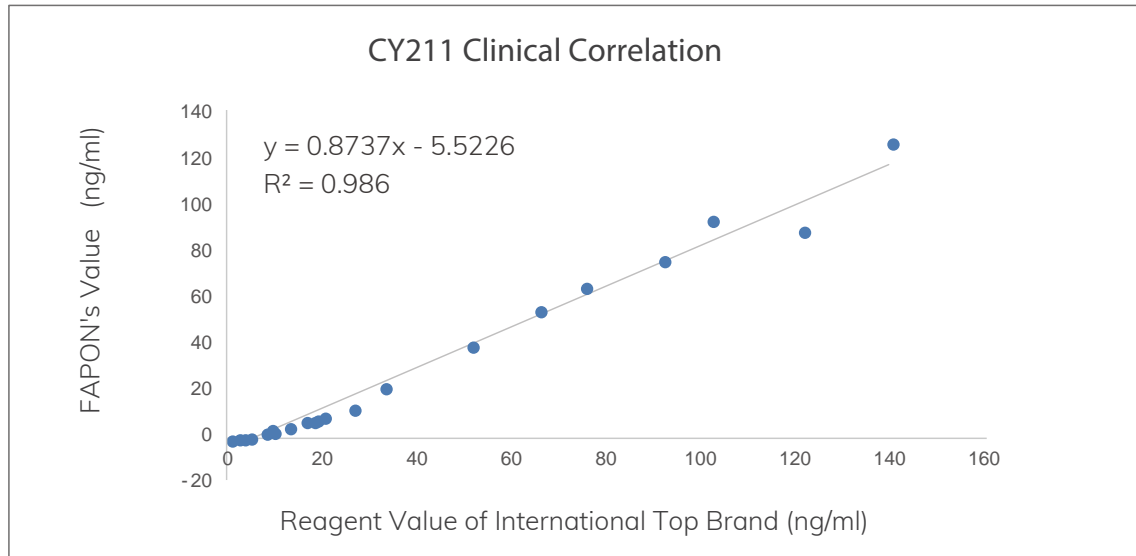
☆CY211 Antibody

Antibody	BENCYFN105	BEJCYFS101	BEJCYFS102
Usage	Coating	Labeling	Labeling
Subtype	IgG2a	IgG2b	IgG2b
Buffer	10mM PB + 150mM NaCl + 0.1% Proclin300, pH7.4		
Storage Condition	-20°C ± 5°C		
Shelf Life	3 years		
Purity	≥ 90%		

☆Recommended Pairing

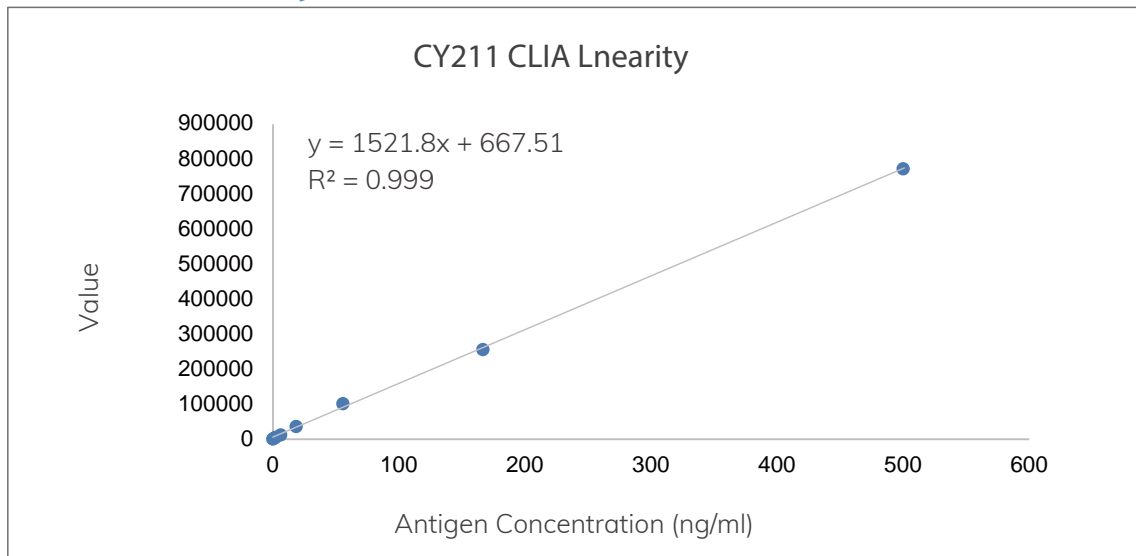
Catalog No.	Recommended Usage	Application Platform
BENCYFN105	Coating	ELISA/CLIA
BEJCYFS101	Labeling	

☆Clinical Correlation



© Summary: There is a good linear correlation between Fapon's CY211 and the reagent values of international top brand.

☆CLIA Linearity



© Summary: Fapon's CY211 exhibits excellent linearity, with a linear range of 0.1-500 ng/ml and R^2 of 0.999.

★Pairing Antigen

Catalog No.	GENCAY211N101
Host	<i>E.coli</i>
Usage	For immunoassays or calibrators
Buffer	20mM PB + protective protein, pH7.4
Molecular Weight	20.3 kDa
Isoelectric Point	5.6
Storage Temperature	-20°C ± 5°C
Shelf Life	3 years

CA242

It is a thorny issue to detect pancreatic cancer , benign liver and gallbladder diseases using tumor markers. Receiver operating characteristic (ROC) curve analysis of tumor markers in pancreatic cancer shows that CA242 has a sensitivity of 70%-80% when the false positive rate in detection falls within 10% (the specificity exceeds 90%). It serves as an independent indicator that helps clinicians differentiate benign and malignant conditions.

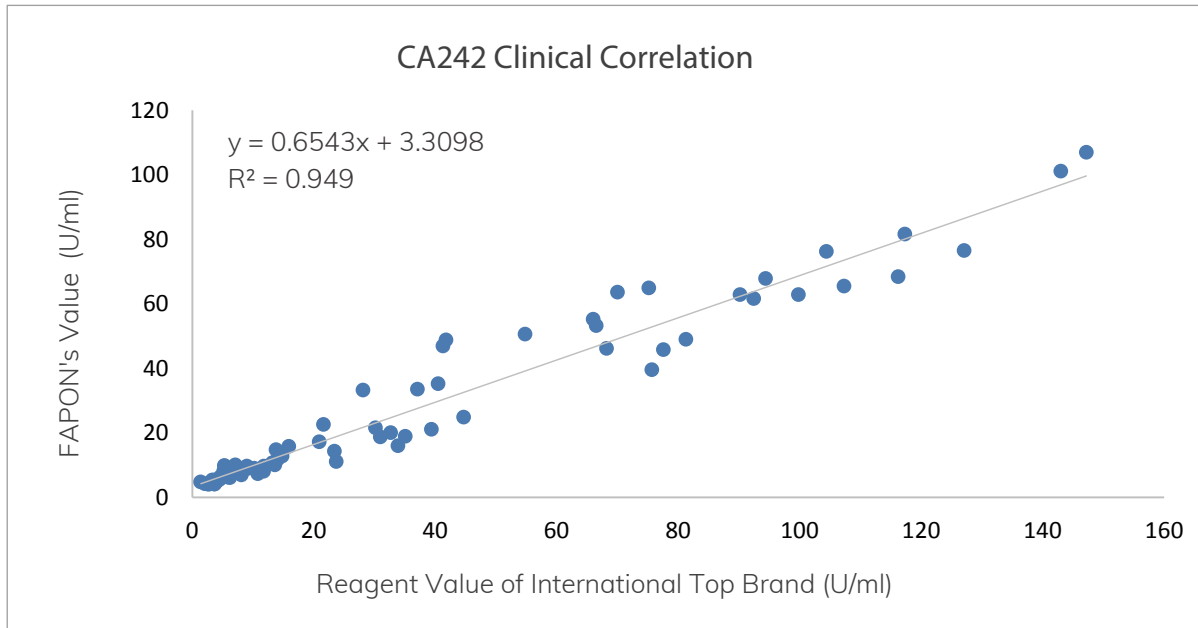
☆CA242 Antibody

Antibody	BECCA242S102	BECCA242S103	BENCA242S101
Usage	Coating/Labeling	Coating	Coating/Labeling
Subtype	IgG1	IgM	IgG1
Buffer	10mM PB + 150mM NaCl + 0.1% Proclin300, pH7.4		
Storage Condition	-20℃ ± 5℃		
Shelf Life	3 years		
Purity	≥ 90%		

☆Recommended Pairing

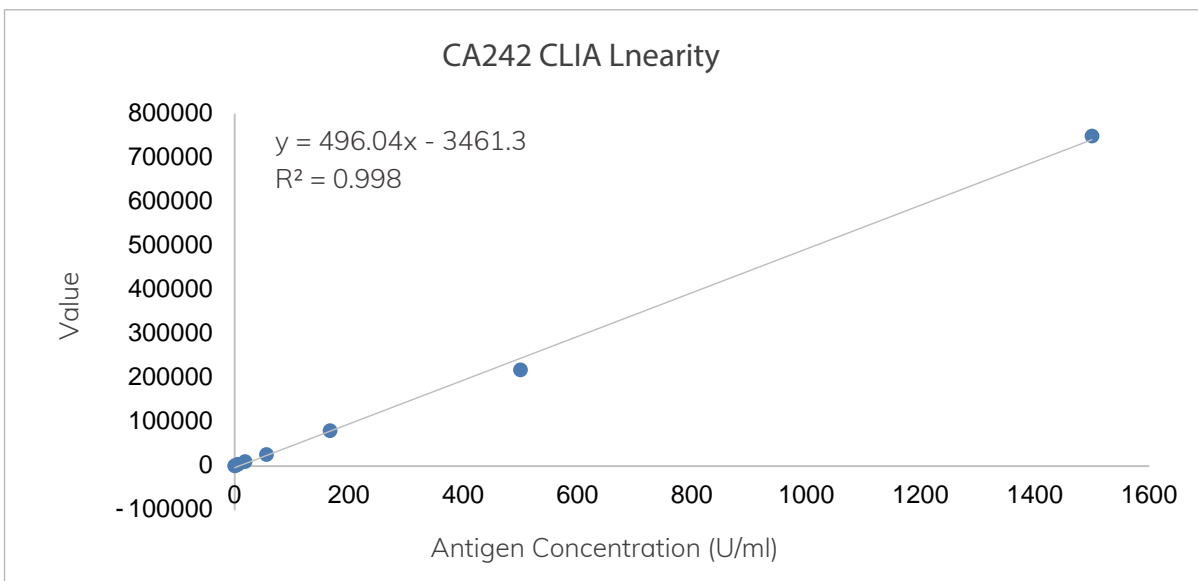
Catalog No.	Recommended Usage	Application Platform
BECCA242S103	Coating	ELISA/CLIA
BECCA242S102	Labeling	

☆Clinical Correlation



© Summary: There is an excellent clinical correlation between Fapon's CA242 and the values of international top brand.

☆CLIA Linearity



© Summary: Fapon's CA242 exhibits excellent linearity, with a linear range of 0.1-500 U/ml and R^2 of 0.998.

☆Pairing Antigen

Catalog No.	GENCA242N101
Host	Native
Usage	For immunoassays or calibrators
Buffer	0.9% NaCl + protective protein
Storage Temperature	-20 °C ± 5 °C
Shelf Life	3 years

CA724

The positive rate of serum CA724 in patients with gastric cancer is 59%. The positive rate of combined detection (together with CA199 and CEA) is greater than 70%. Serum CA724 demonstrates a high specificity for the diagnosis of malignant lesions, and is rarely detected in normal cells and benign lesions.

In addition, CA724 exhibits a certain positive detection rate in patients with colorectal cancer, breast cancer, cholangiocarcinoma, lung cancer and ovarian cancer. Its positive rate in patients with concomitant distant metastasis is even higher.

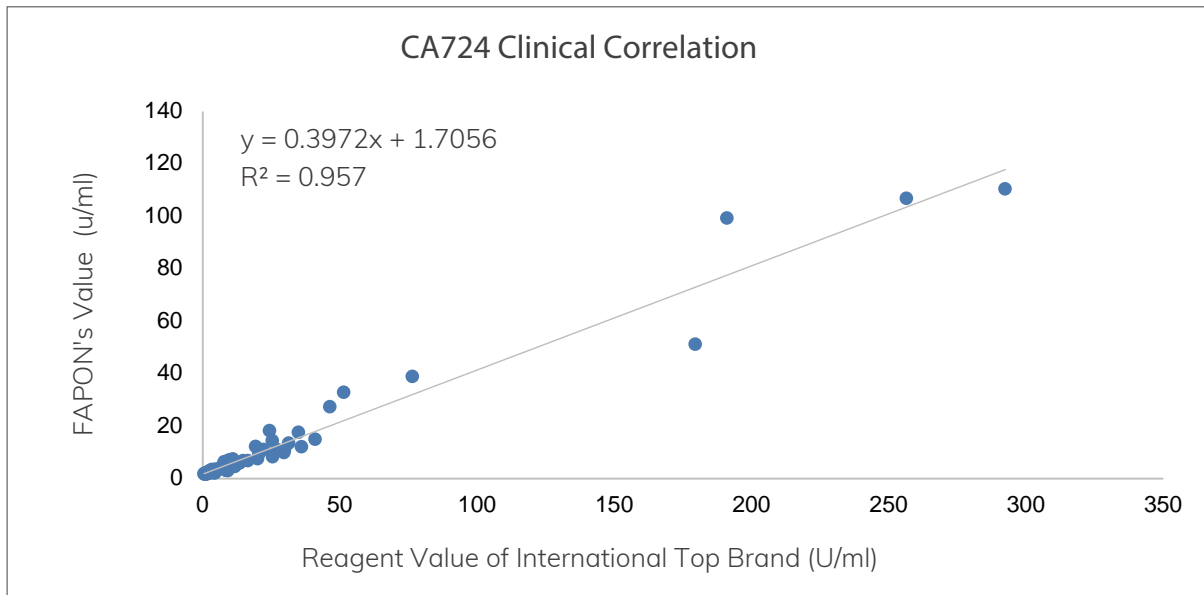
☆CA724 Antibody

Antibody	BECCA724S106	BECCA724S105	BECCA724S107	BEJCA724S105
Usage	Labeling	Coating	Coating	Labeling
Subtype	IgG1	IgG1	IgG1	IgG1
Buffer	10mM PB + 150mM NaCl + 0.1% Proclin300, pH7.4			
Storage Condition	-20℃ ± 5℃			
Shelf Life	3 years			
Purity	≥ 90%			

☆Recommended Pairing

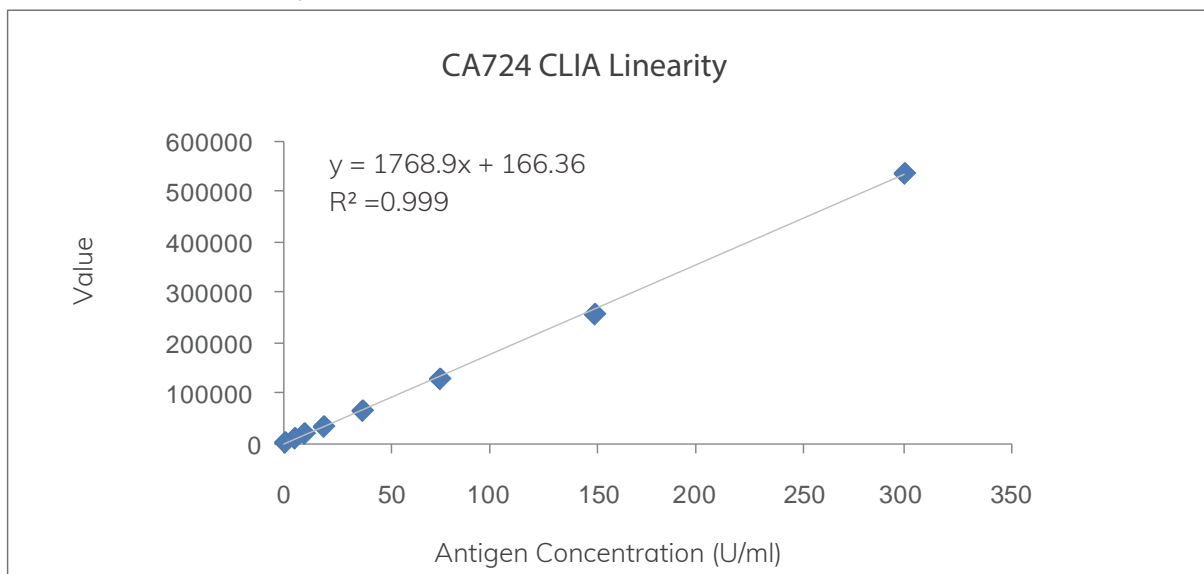
Catalog No.	Recommended Usage	Application Platform
BECCA724S107	Coating	ELISA/CLIA
BEJCA724S105	Labeling	

☆Clinical Correlation



© Summary: There is an excellent linear correlation between Fapon's CA724 and the reagent values of international top brand.

☆CLIA Linearity



© Summary: Fapon's CA742 exhibits excellent linearity, with a linear range of 1.2-300 U/ml and R^2 of 0.999.

☆Pairing Antigen

Catalog No.	GENCA724N101
Host	Native
Usage	For immunoassays or calibrators
Buffer	0.9% NaCl + protective protein
Storage Temperature	-20°C ± 5°C
Shelf Life	3 years

CA153

CA153 is mainly present in several types of adenocarcinomas, such as breast cancer, lung adenocarcinoma, ovarian cancer and pancreatic cancer. With a low sensitivity, serum CA153 levels rarely exceed 30 kU/L in early breast cancer, but with progressive breast cancer, 60%~80% cases have CA153 levels above 30 kU/L. CA153 is highly associated with breast cancer and can be used to determine breast cancer progression and metastasis, as well as monitor treatment efficacy and recurrence. Serum CA153 levels decrease after the effective treatment of breast cancer, and increase in the event of metastasis or recurrence.

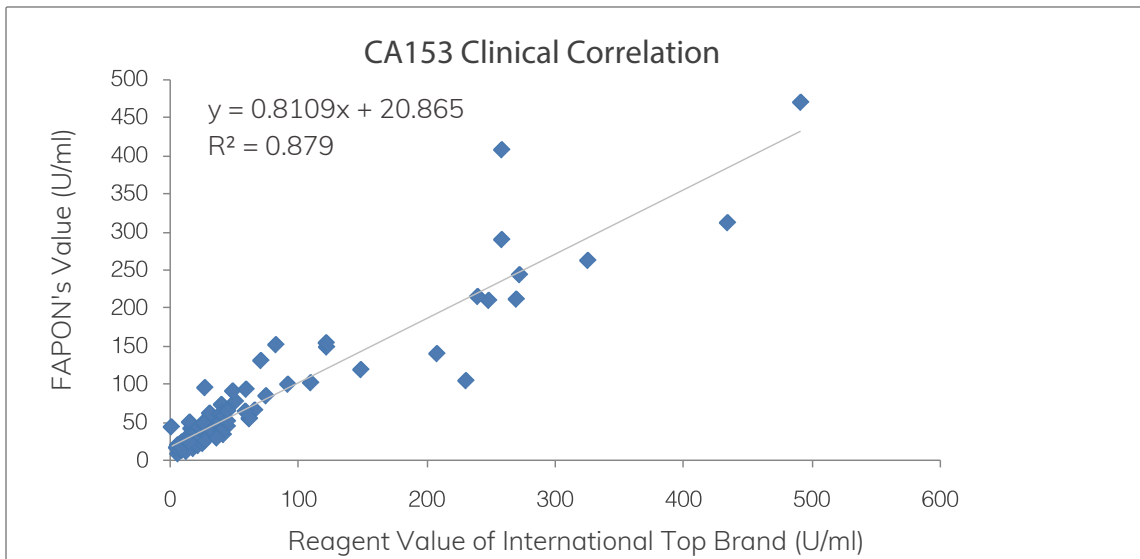
☆CA153 Antibody

Antibody	BECCA153S102	BEJCA153S102	BECCA153S103	BEJCA153S104	BEJCA153S105
Usage	Coating	Labeling	Coating	Labeling	Labeling
Subtype	IgG1	IgG1	IgG1	IgG1	IgG1
Buffer	10mM PB + 150mM NaCl + 0.1% Proclin300, pH7.4				
Storage Condition	-20 °C ± 5 °C				
Shelf Life	3 years				
Purity	≥ 90%				

☆Recommended Pairing

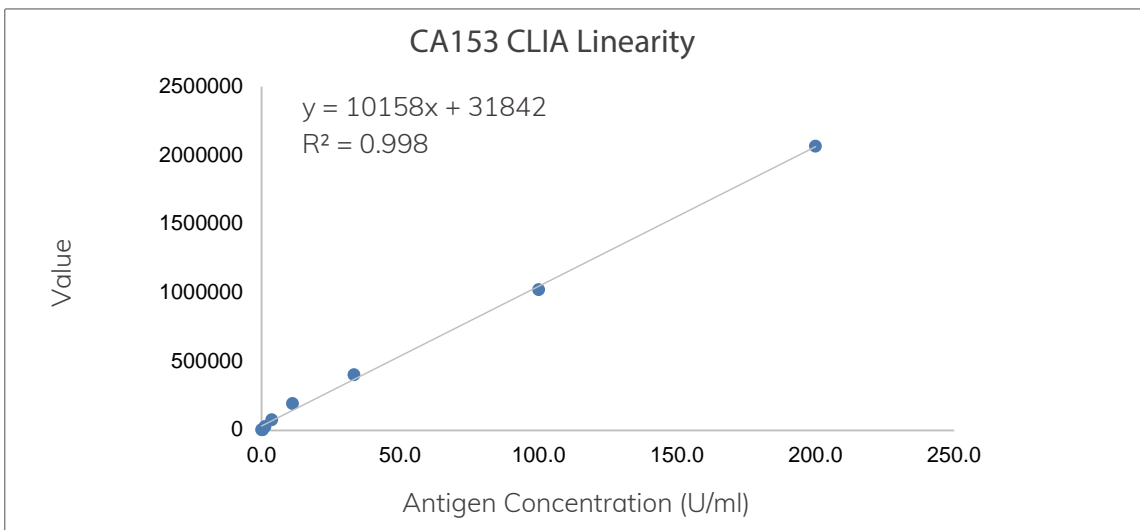
Catalog No.	Recommended Usage	Application Platform
BECCA153S103	Coating	ELISA/CLIA
BEJCA153S105	Labeling	

☆Clinical Correlation



© Summary: There is a good correlation between Fapon's CA153 and the reagent values of international top brand.

☆CLIA Linearity



© Summary: Fapon's CA153 exhibits excellent linearity, with a linear range of 0.4-200 U/ml and R^2 of 0.998.

☆Pairing Antigen

Catalog No.	GENCA153N101
Host	Native
Usage	For immunoassays or calibrators
Buffer	0.9% NaCl + protective protein
Storage Temperature	-20°C ± 5°C
Shelf Life	3 years

SCCA

The squamous cell carcinoma antigen (SCCA) is a tumor marker associated with various organs. Increased SCCA can be seen in many types of cancers, including cervical, ovarian, lung (non-small cell lung cancer), skin, head and neck, gastrointestinal and urinary tract. Because SCCA level rarely increases at the early stage cancer, thus it is uncommon to use SCCA for cancer screening. The SCCA elevation is closely related to tumor malignancy, often indicates cancer deterioration that accompanied by metastasis, therefore SCCA is used for treatment monitoring and prognostic evaluation. And specifically, SCCA elevation is detected in 70% advanced cervical cancers and 90% recurrent cervical cancers.

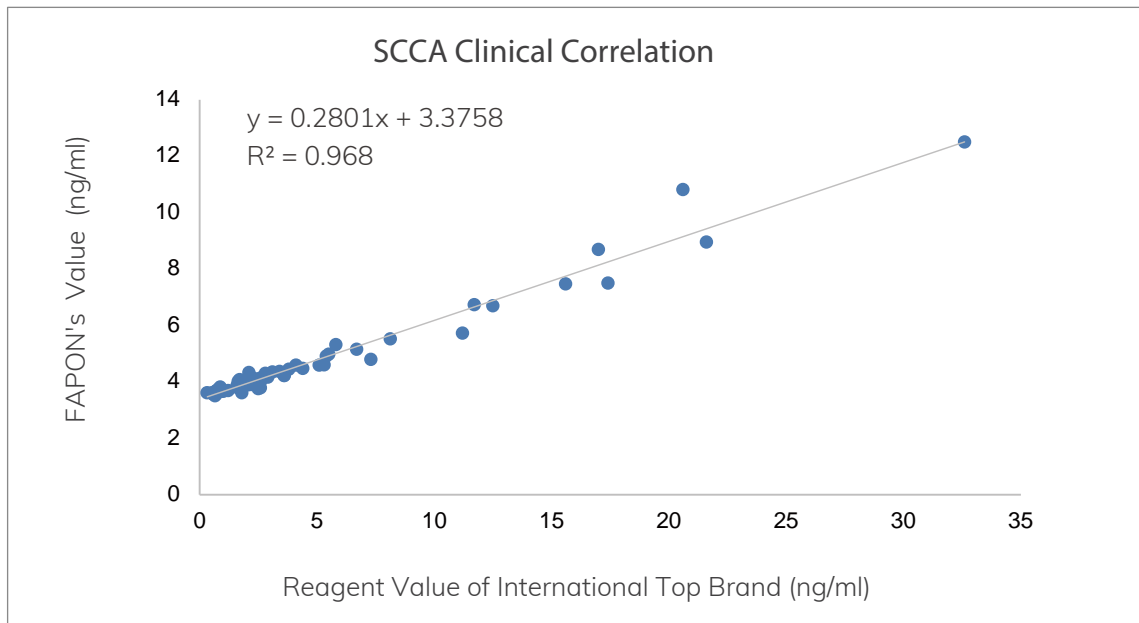
☆SCCA Antibody

Antibody	BECSCCAS101	BEJSCCAS101
Usage	Coating	Labeling
Subtype	IgG1	
Buffer	10mM PB + 150mM NaCl + 0.1%Proclin300, pH7.4	
Storage Condition	-20℃ ± 5℃	
Shelf Life	3 years	
Purity	≥ 90%	

☆Recommended Pairing

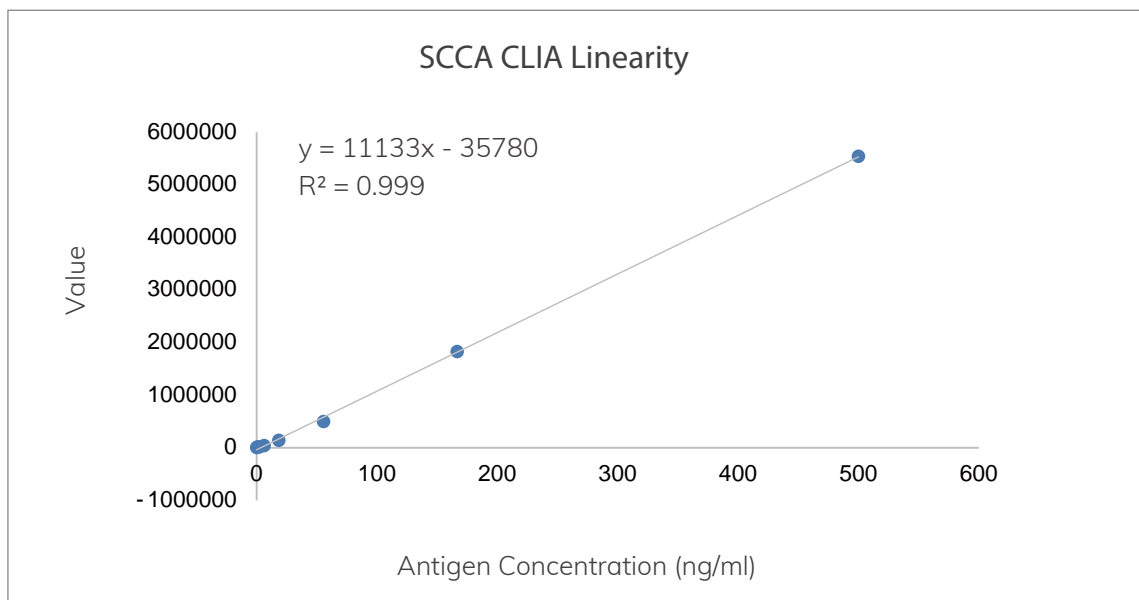
Catalog No.	Recommended Usage	Application Platform
BECSCCAS101	Coating	ELISA/CLIA
BEJSCCAS101	Labeling	

☆Clinical Correlation



© Summary: There is a good correlation between Fapon's SCCA and the reagent values of international top brand.

☆CLIA Linearity



© Summary: Fapon's SCCA exhibits excellent linearity, with a linear range of 0.4-500 ng/ml and R^2 of 0.999.

PGI/II

Pepsinogen (PG) is a precursor of pepsin that reflects the number of chief cells. PG is classified into two types, known as PGI and PGII. Gastric mucosal lesions affect PG-secreting cells and result in the change of PG levels in serum. PGI levels elevate when gastric acid secretion increases and reduce when gastric acid secretion decreases or gastric corpus atrophy progresses. Therefore, PGI serves as an indicator for the detection of gastrin cell functions.

PGII levels are associated with gastric mucosal lesions. Elevated PGII levels may indicate fundic gland atrophy, glandular epithelium metaplasia and dysplasia. PGI secretion and PGI/PGII levels decrease in patients with intestinal metaplasia, atypical hyperplasia and gastric cancer. Therefore, serum PGI/PGII levels are effective markers for the early diagnosis of gastric cancer.

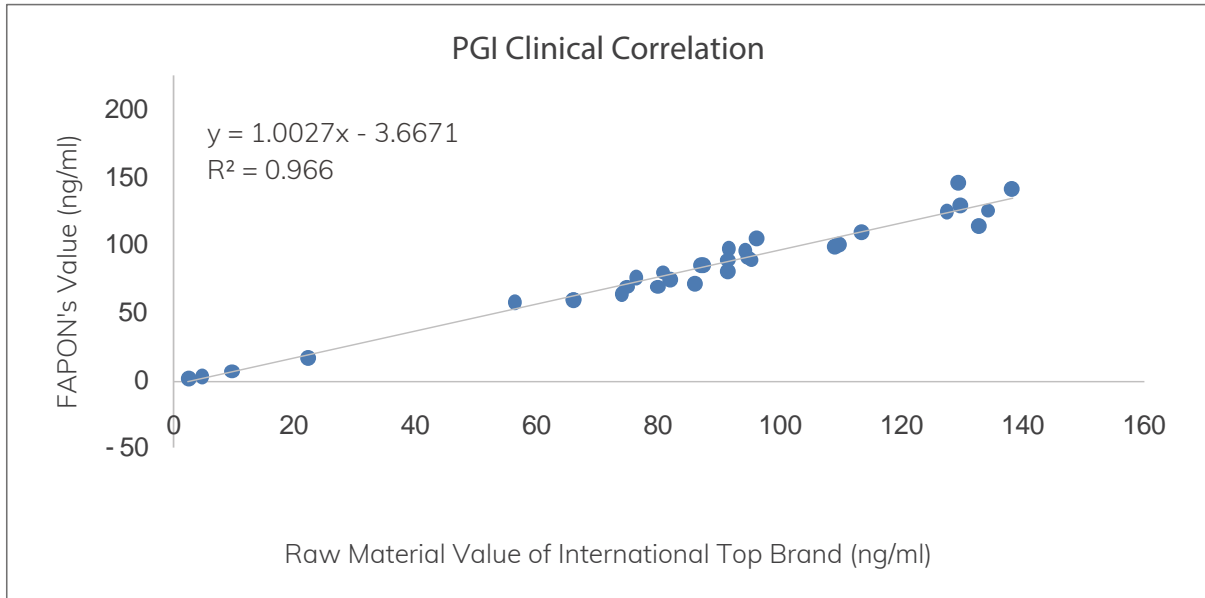
☆PGI Antibody

Antibody	BECPGIS101	BEJPGIS101
Usage	Coating	Labeling
Subtype	IgG1	IgG1
Buffer	10mM PB + 150mM NaCl + 0.1% Proclin300, pH6.0	
Storage Condition	-20 °C ± 5 °C	
Shelf Life	3 years	
Purity	≥ 90%	

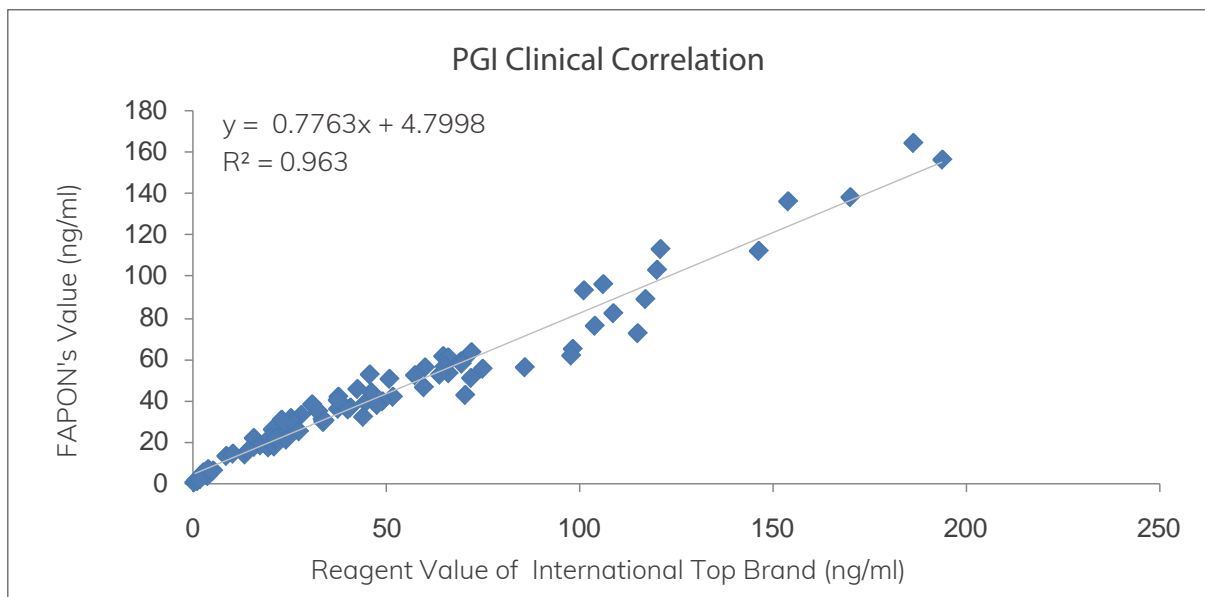
☆Recommended Pairing

Catalog No.	Recommended Usage	Application Platform
BECPGIS101	Coating	ELISA/CLIA
BEJPGIS101	Labeling	

☆ Clinical Correlation

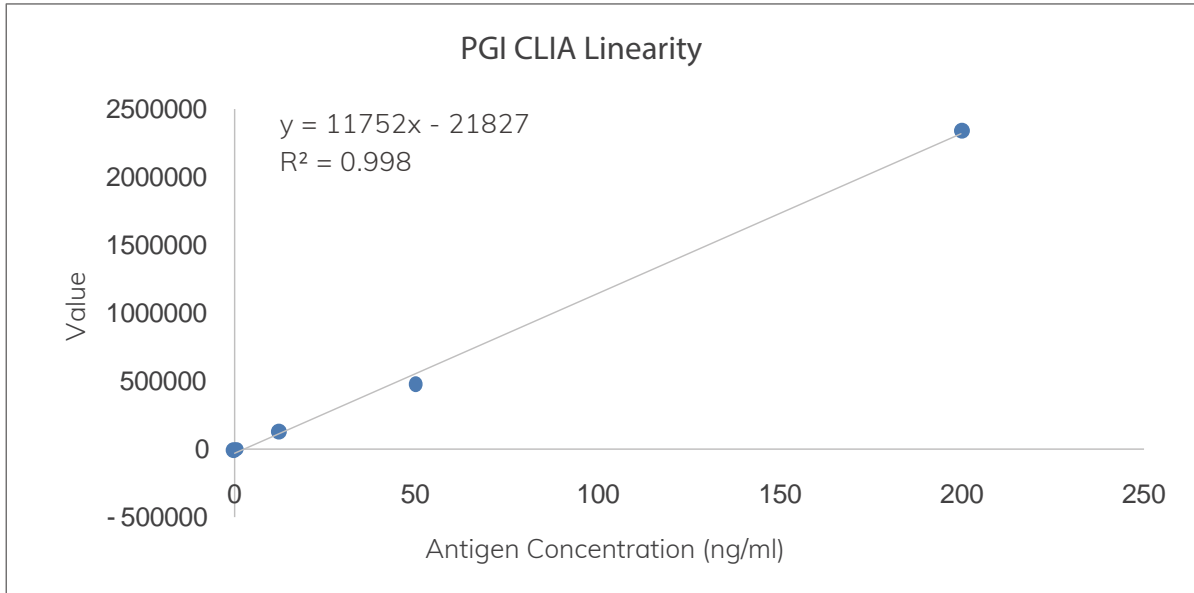


© Summary: There is an excellent correlation between Fapon's PGI and the raw material values of international top brand.



© Summary: There is an excellent correlation between Fapon's pairing values and the reagent values of international top brand.

☆CLIA Linearity



© Summary: Fapon's PGI exhibits excellent linearity, with a linear range of 1-200 ng/ml and R^2 of 0.998.



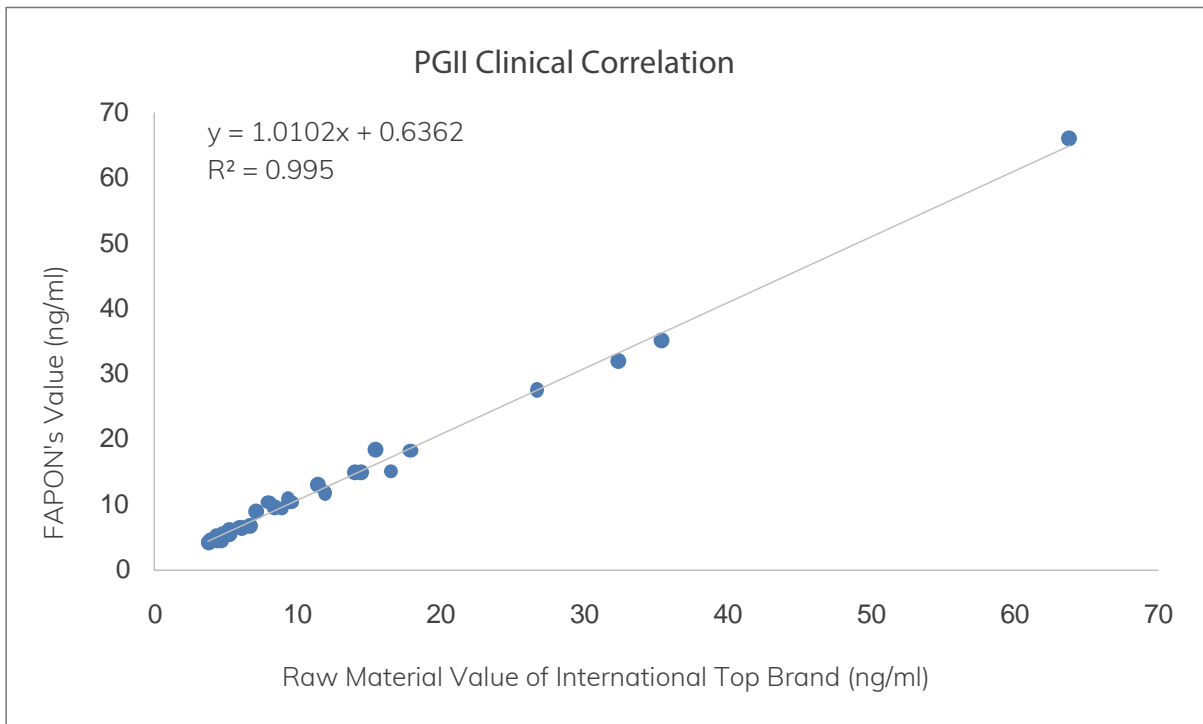
☆PGII Antibody

Antibody	BECPGIIS102	BEJPGIIS102	BECPGIIS101
Usage	Coating	Labeling	Coating
Subtype	IgG1	IgG1	IgG1
Buffer	10mM PB + 150mM NaCl + 0.1% Proclin300, pH7.4	10mM PB + 150mM NaCl + 0.1% Proclin300, pH6.0	10mM PB + 150mM NaCl + 0.1%Proclin300, pH7.4
Storage Condition	-20 °C ± 5 °C		
Shelf Life	3 years		
Purity	≥ 90%		

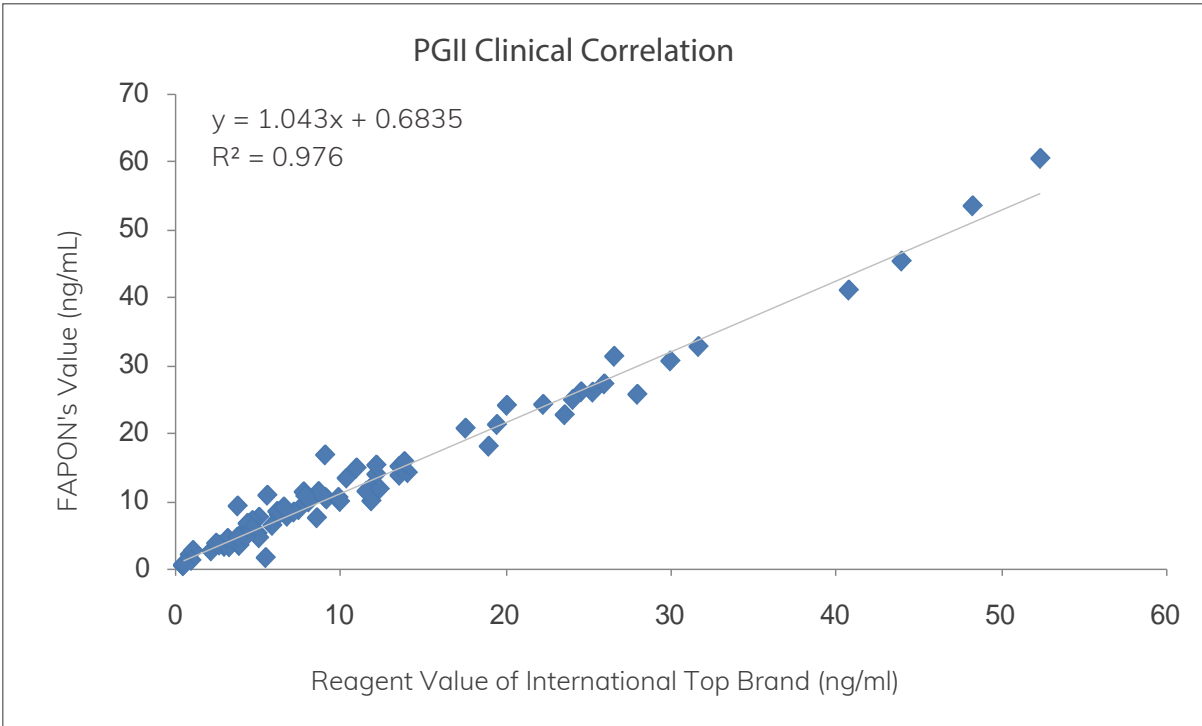
☆Recommended Pairing

Catalog No.	Recommended Usage	Application Platform
BECPGIIS102	Coating	ELISA/CLIA
BEJPGIIS102	Labeling	

☆Clinical Correlation

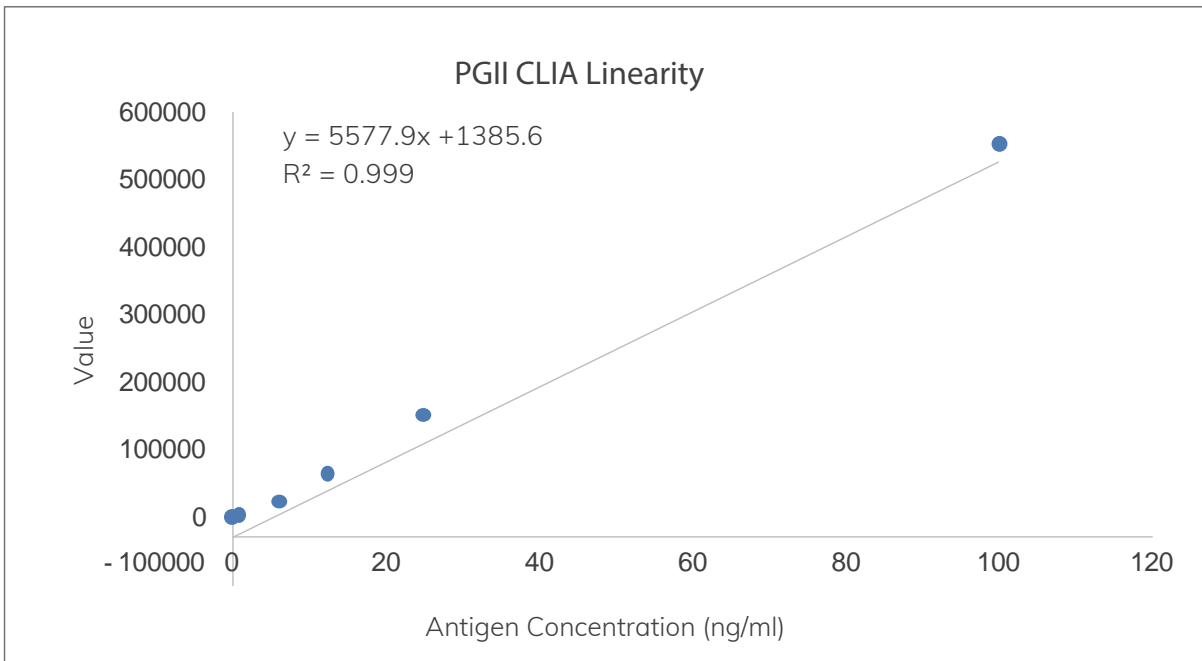


© Summary: There is an excellent correlation between Fapon's pairing values and the raw material values of international top brand.



© Summary: There is an excellent correlation between Fapon's pairing values and the reagent values of international top brand.

☆ **CLIA Linearity**



© Summary: Fapon's PGII exhibits excellent linearity, with a linear range of 1-100 ng/ml and R^2 of 0.999.

CA125

The antigenic determinant of CA125 is associated with a large molecular weight glycoprotein of the ovarian cavity epithelium during embryonic development. CA125 can be used to detect common non-mucinous epithelial ovarian cancers, but it may not be helpful in the detection of endometrial carcinoma and clear cell carcinoma.

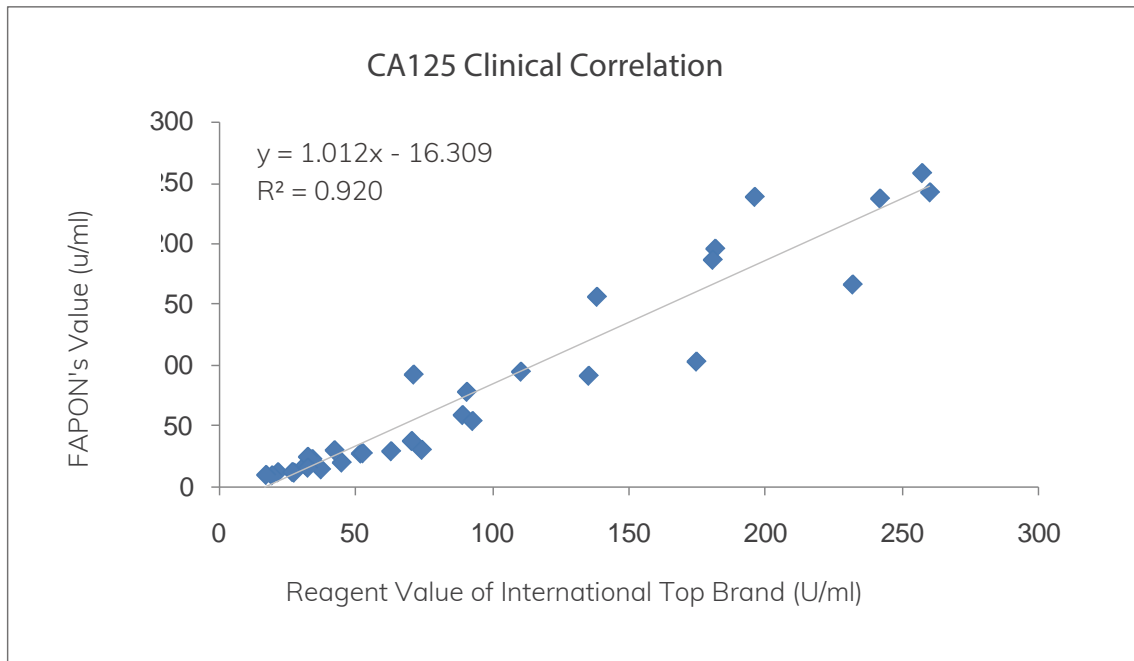
☆CA125 Antibody

Antibody	BENCA125S101	BECCA125S104	BECCA125S105	BECCA125S108
Usage	Labeling	Coating	Coating	Coating
Subtype	IgG1	IgG1	IgG2a	IgG1
Buffer	10mM PB + 150mM NaCl + 0.1% Proclin300, pH7.4			
Storage Condition	-20 °C ± 5 °C			
Shelf Life	3 years			
Purity	≥ 90%			

☆Recommended Pairing

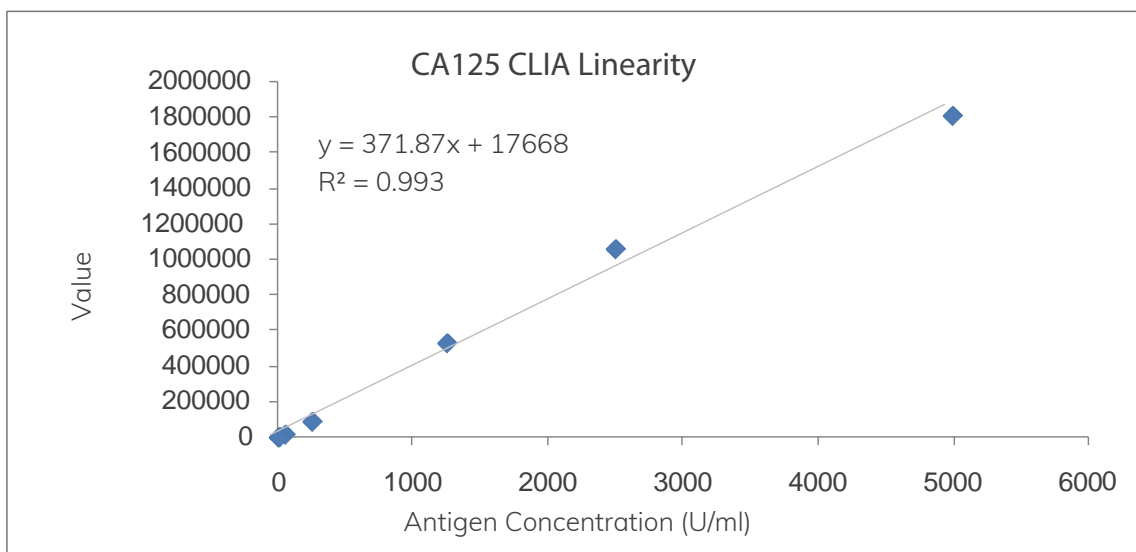
Catalog No.	Recommended Usage	Application Platform
BECCA125S105	Coating	ELISA/CLIA
BENCA125S101	Labeling	

☆Clinical Correlation



◎Summary: There is a good linear correlation between Fapon's CA125 and the reagent values of international top brand.

☆CLIA Linearity



◎Summary: Fapon's CA125 exhibits excellent linearity with a linear range of 2-5000 U/ml and R² of 0.993.

☆Pairing Antigen

Catalog No.	GENCA125N101
Host	Native
Usage	For immunoassays or calibrators
Buffer	0.9% NaCl + protective protein
Storage Temperature	-20°C ± 5°C
Shelf Life	3 years

CA199

CA199 is a tumor marker in colorectal cancer and pancreatic cancer. The quantitative detection and auxiliary monitoring of serum CA199 levels in patients with pancreatic cancer have been approved by the FDA. CA199 aids the post-operative monitoring of pancreatic cancer and colorectal cancer. Elevated CA199 levels indicate tumor recurrence, which can be detected 1-7 months earlier than ultrasound and clinical diagnosis. Therefore, CA199 serves as an important indicator that reflects the prognosis of patients and determine whether they have relapsed after surgery.

☆CA199 Antibody

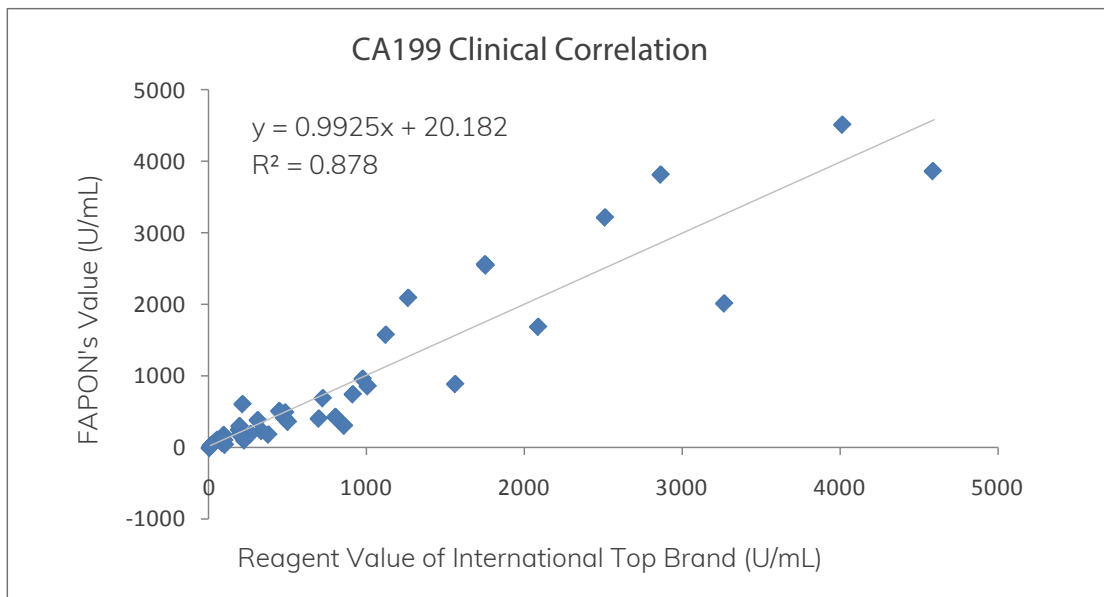
Antibody	BECCA199S104	BECCA199S104	BECCA199S103
Usage	Coating	Labeling	Coating
Subtype	IgG1	IgG1	IgM
Buffer	10mM PB + 150mM NaCl + 0.1% Proclin300, pH7.4		
Storage Condition	-20℃ ± 5℃		
Shelf Life	3 years		
Purity	≥ 90%		

☆Recommended Pairing

Catalog No.	Recommended Usage	Application Platform
BECCA199S104	Coating	ELISA/CLIA
BECCA199S104	Labeling	

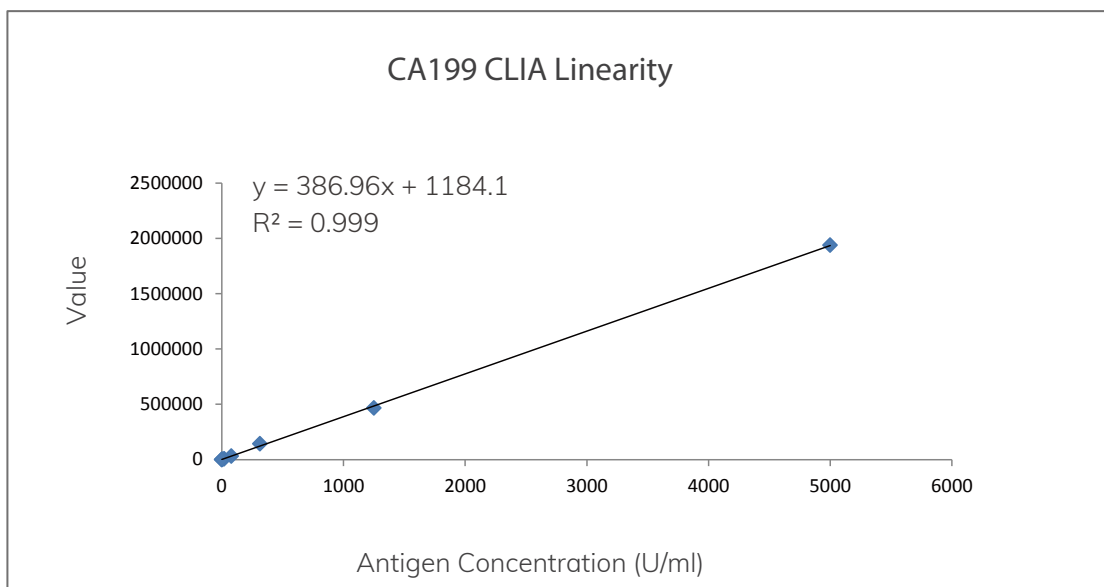
Catalog No.	Recommended Usage	Application Platform
BECCA199S104	Labeling	ELISA/CLIA
BECCA199S103	Coating	

☆Clinical Correlation



◎ Summary: There is a good linear correlation between Fapon's CA199 and the reagent values of international top brand.

☆CLIA Linearity



◎ Summary: Fapon's CA199 exhibits excellent linearity, with a linear range of 1.2-5000 U/ml and R^2 of 0.999.

☆Pairing Antigen

Catalog No.	GENCA199N101
Host	Native
Usage	For immunoassays or calibrators
Buffer	0.9% NaCl + protective protein
Storage Temperature	$-20^{\circ}\text{C} \pm 5^{\circ}\text{C}$
Shelf Life	3 years

HE4

Studies have found that HE4 sensitivity to early ovarian cancer can reach as high as 45.9% at 95% specificity compared with benign diseases. HE4 levels decrease after ovarian cancer surgery and increase as early as 30 weeks before clinical recurrence. HE4 levels are highly associated with disease progression in ovarian cancer patients. Therefore, HE4 serves as an important indicator for the post-operative follow-ups on ovarian malignant tumors as well as a sensitive indicator for the monitoring of early recurrence.

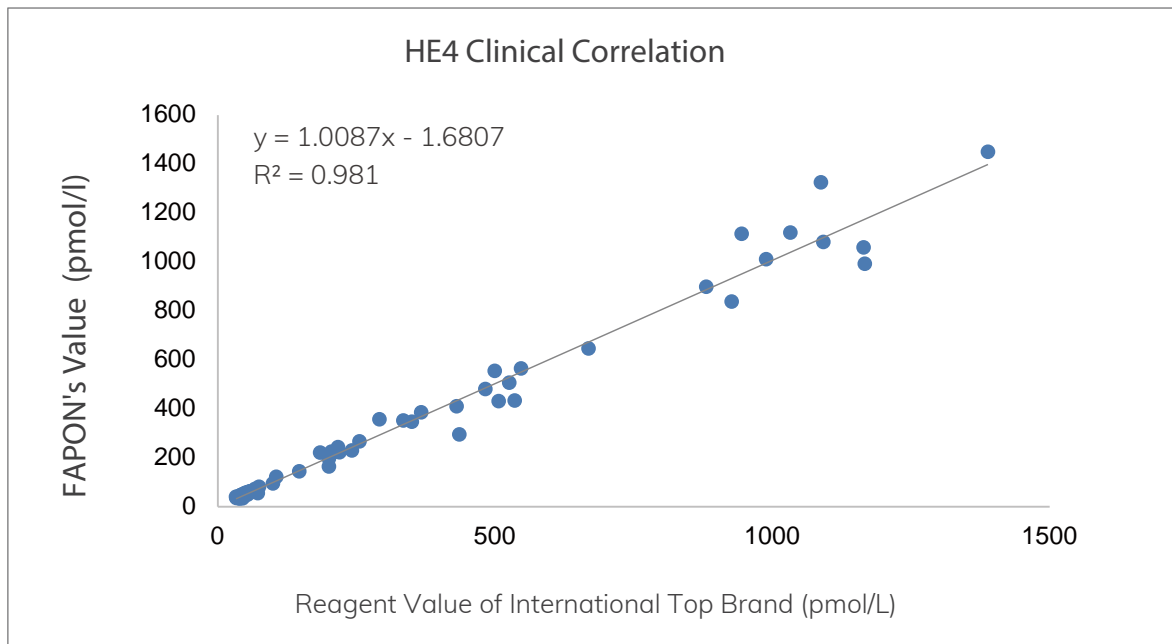
☆HE4 Antibody

Antibody	BECHE4S102	BEJHE4S102
Usage	Coating	Labeling
Subtype	IgG2a	IgG1
Buffer	10mM PB + 150mM NaCl + 0.1% Proclin300, pH7.4	
Storage Condition	-20 °C ± 5 °C	
Shelf Life	3 years	
Purity	≥ 90%	

☆Recommended Pairing

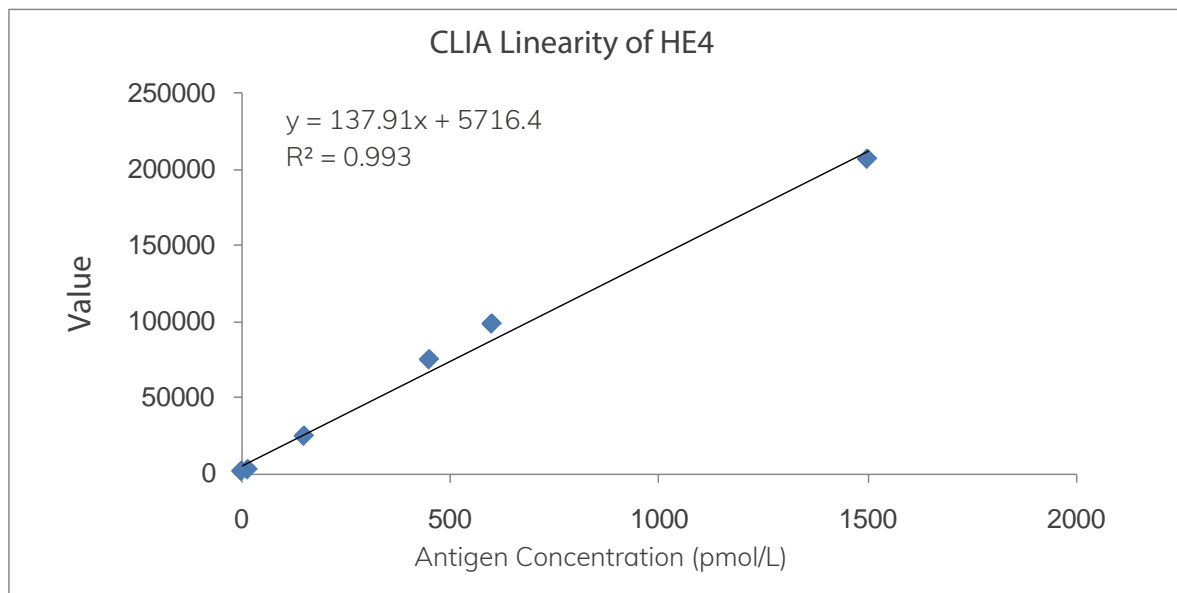
Catalog No.	Recommended Usage	Application Platform
BECHE4S102	Coating	ELISA/CLIA
BEJHE4S102	Labeling	

☆Clinical Correlation



© Summary: There is a good linear correlation between Fapon's HE4 and the reagent values of international top brand.

☆CLIA Linearity



© Summary: Fapon's HE4 exhibits excellent linearity, with a linear range of 15-1500 pmol/l and R^2 of 0.993.

☆Pairing Antigen

Catalog No.	GENHE4N101
Host	<i>E.coli</i>
Usage	For immunoassays or calibrators
Buffer	20mM PB + protective protein, pH7.4
Molecular Weight	11 kD
Isoelectric Point	6.03
Storage Temperature	-20 C ± 5 C
Shelf Life	3 years



CA50

CA50 is a tumor marker for pancreatic cancer and colorectal cancer. The normal reference levels of serum CA50 vary with different measurement methods and usually fall within the range of 14-20 kU/L. Elevated CA50 levels are indicative of benign pancreatic diseases (12%-46%), cholangiopathies (35%-38%), and liver diseases (22%-59%). CA50 has a positive rate of 80%-97% in the diagnosis of pancreatic cancer. Its positive rate in the diagnosis of rectal cancer varies according to the severity of the disease: Dukes' A 19%-43%, B 30%-59%, C 53%-73%, D 53%-73%. The positive rate of elevated CA50 levels also varies according to the type of 40 gastric cancer, 58%-70% in cholangiocarcinoma, and 14%-78% in liver cancer. The positive rate of elevated CA levels is lower in patients with other malignant tumors (including breast cancer, lung cancer, kidney cancer, prostate cancer, bladder cancer, ovarian cancer, etc.).

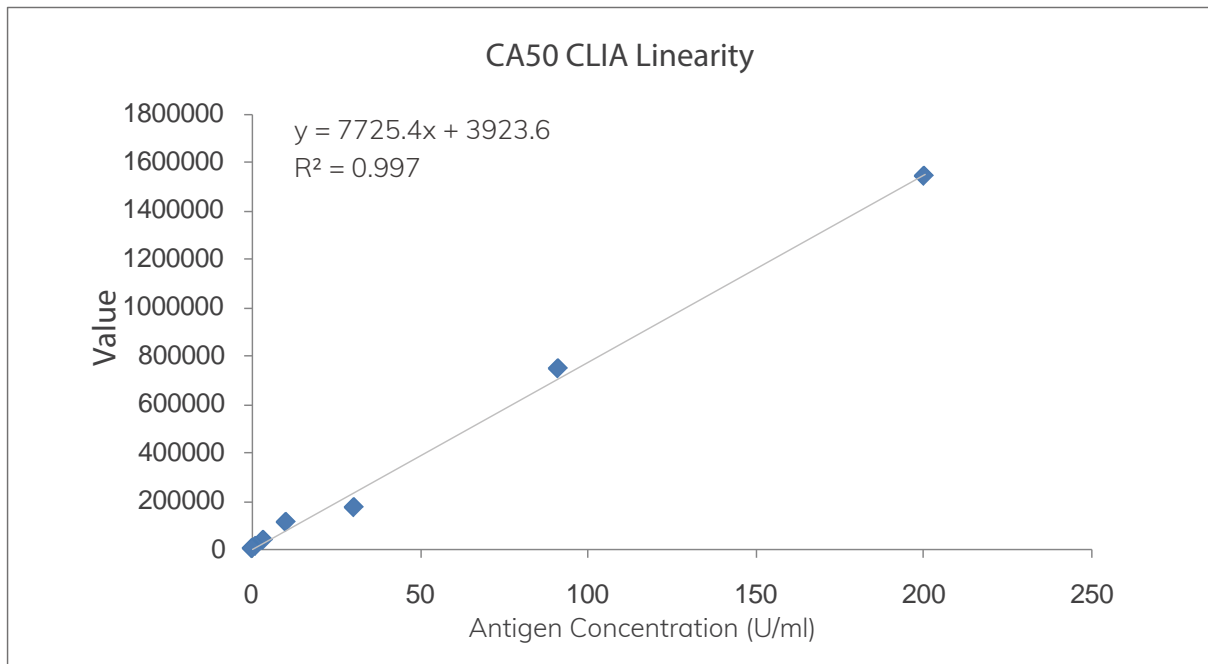
☆CA50 Antibody

Antibody	BENCA50S101	BENCA50S101
Usage	Coating/Labeling	
Subtype	IgM	
Buffer	10mM PB + 150mM NaCl + 0.08%NaN ₃ , pH7.4	
Storage Condition	-20 C ± 5 C	
Shelf Life	3 years	
Purity	≥ 90%	

☆Recommended Pairing

Catalog No.	Recommended Usage	Application Platform
BENCA50S101	Coating/Labeling	ELISA/CLIA
BENCA50S101		

☆CLIA Linearity



Summary: Fapon's CA50 exhibits excellent linearity, with a linear range of 0.37-273.3 U/ml and R² of 0.997.

☆Pairing Antigen

Catalog No.	GENCA50N101
Host	Native
Usage	For immunoassays or calibrators
Buffer	0.9% NaCl + protective protein
Storage Temperature	-20 °C ± 5 °C
Shelf Life	3 years

AFP

By radioimmunoassay, the positive rate of serum AFP in patients with primary liver cancer ranges is between 60%-85%. High incidences of liver cancer have been proven to occur in case of serum AFP concentration > 200 ug/L, which persists for more than 8 weeks, or when serum AFP concentration reaches 300-500 ug/L, which persists for 2-4 weeks or even goes higher after the medical reexamination. Changes in AFP levels in primary liver cancer should be observed after surgery or chemotherapy. In general, AFP should return to normal levels within 2 months. If the AFP level rises again following a decrease, it may indicate incomplete treatment or recurrence. If the AFP level remains high, fluctuates or increases after treatment, it indicates a worsening condition and a poor prognosis.

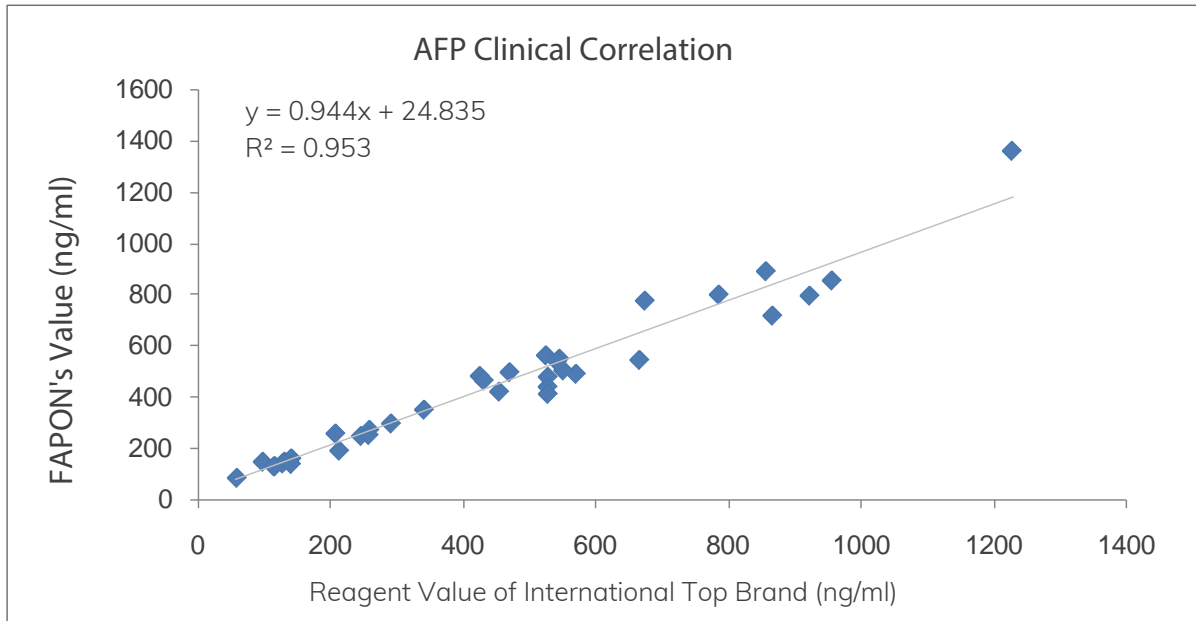
☆AFP Antibody

Antibody	BECAFPS101	BECAFPS103	BECAFPS104	BECAFPS102	BECAFPS107	BECAFPS105	BECAFPS106
Usage	Labeling	Labeling	Coating	Coating	Labeling	Labeling	Labeling
Subtype	IgG1	IgG1	IgG1	IgG1	IgG1	IgG1	IgG1
Buffer	10mM PB + 150mM NaCl + 0.1% Proclin300, pH7.4						
Storage Condition	-20 °C ± 5 °C						
Shelf Life	3 years						
Purity	≥90%						

☆Recommended Pairing

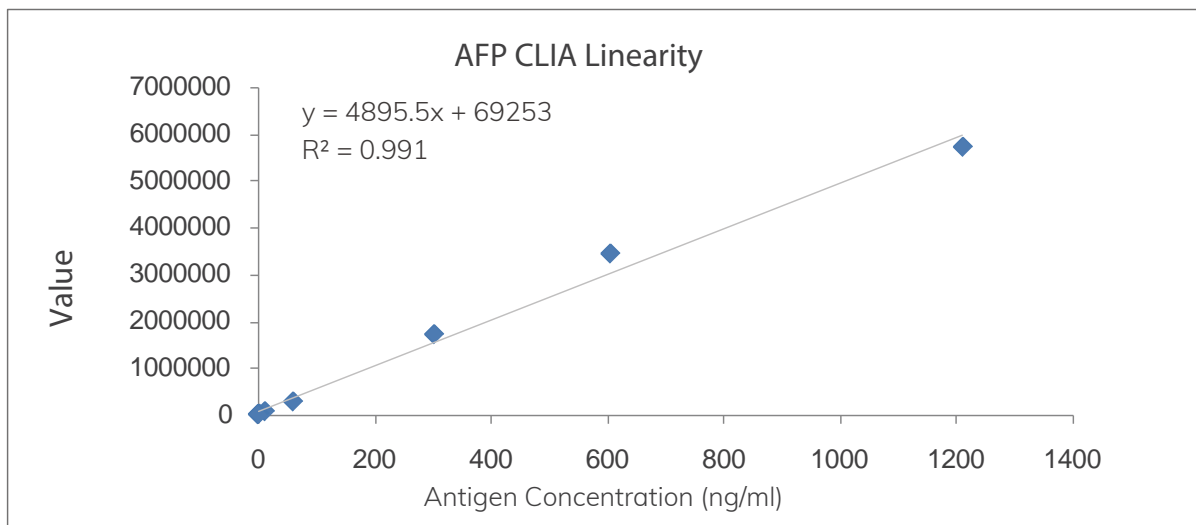
Catalog No.	Recommended Usage	Application Platform
BECAFPS102	Coating	ELISA/CLIA
BECAFPS107	Labeling	

☆Clinical Correlation



© Summary: There is an excellent linear correlation between Fapon's AFP and the reagent values of international top brand.

☆CLIA Linearity



© Summary: FAPON's AFP exhibits excellent linearity, with a linear range of 0.484-1210 ng/ml and R^2 of 0.991.

☆Pairing Antigen

Catalog No.	GENAFP101
Host	Native
Usage	For immunoassays or calibrators
Buffer	0.9% NaCl + protective protein
Storage Temperature	-20°C ± 5°C
Shelf Life	3 years

CEA

Serum CEA has a high positive rate in the detection of digestive tract malignancies such as colon cancer, rectal cancer, gastric cancer, esophageal cancer, gallbladder cancer and pancreatic cancer. The maximum detection rate of colorectal cancer is 74%, while the average range is between 50%-66%. Serum CEA levels may also rise in patients with certain non-digestive tumors such as lung cancer, breast cancer, ovarian cancer and prostate cancer.

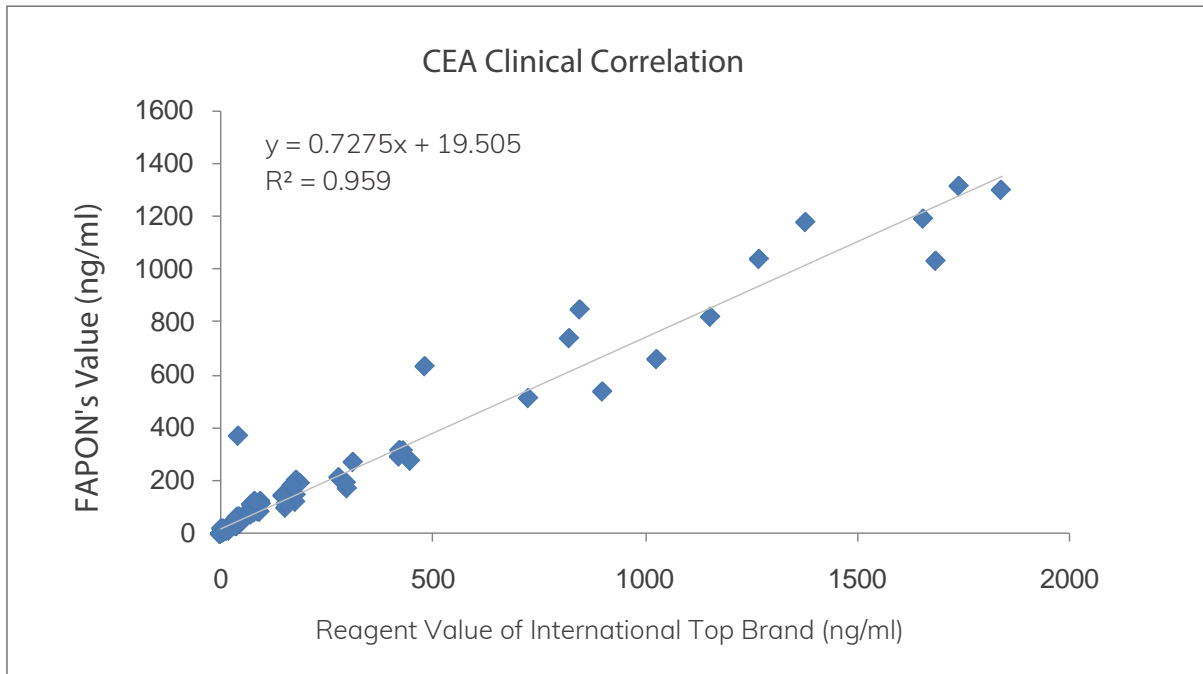
☆CEA Antibody

Antibody	BECCEAS102	BENCEAS101	BECCEAS101	BENCEAS103	BECCEAS103
Usage	Coating	Labeling	Coating	Labeling	Coating
Subtype	IgG1	IgG1	IgG1	IgG1	IgG1
Buffer	10mM PB + 150mM NaCl + 0.1% Proclin300, pH7.4				
Storage Condition	-20 °C ± 5 °C				
Shelf Life	3 years				
Purity	≥ 90%				

☆Recommended Pairing

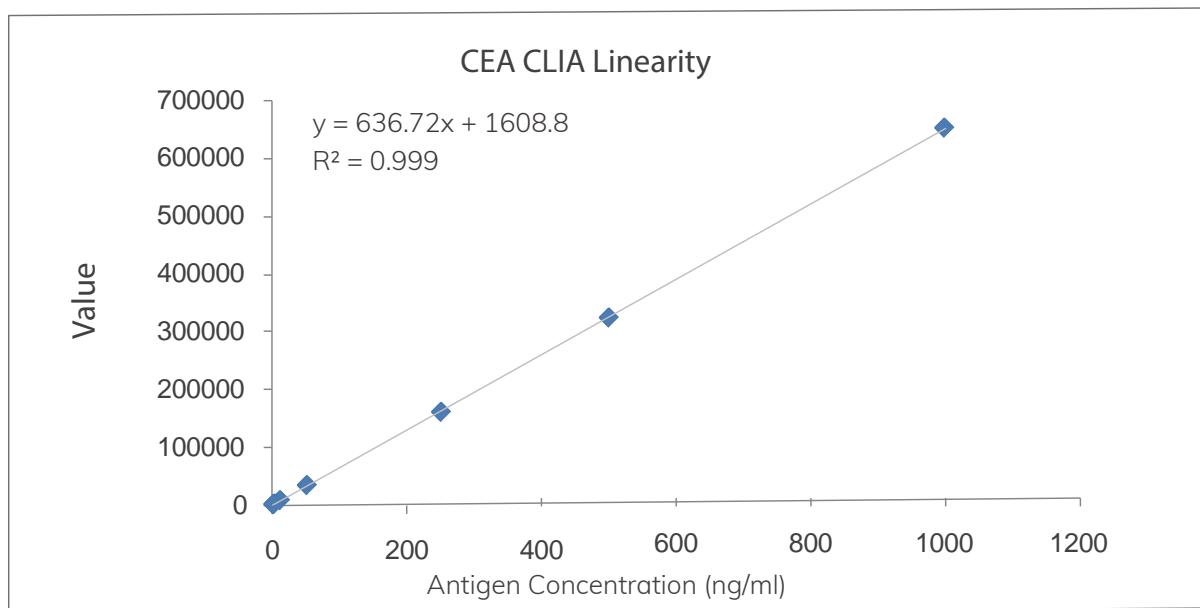
Catalog No.	Recommended Usage	Application Platform
BECCEAS103	Coating	ELISA/CLIA
BENCEAS103	Labeling	

☆Clinical Correlation



©Summary: There is an excellent linear correlation between Fapon's CEA and the reagent values of international top brand.

☆CLIA Linearity



©Summary: Fapon's CEA exhibits excellent linearity, with a linear range of 0.4-1000 ng/ml and R² of 0.999.

☆Pairing Antigen

Catalog No.	GENCEAN101
Host	Native
Usage	For immunoassays or calibrators
Buffer	0.9% NaCl + protective protein
Storage Temperature	-20 °C ± 5 °C
Shelf Life	3 years



PSA

More than 85% of patients with prostate cancer have elevated blood levels of PSA. However, elevated PSA levels may also indicate benign prostate conditions. It can be used in conjunction with other tests to determine early prostate cancer. The serum PSA levels should be halved within 2-3 days after prostate cancer surgical treatment. If no significant decrease is observed after one week, residual cancer tissue may still be present. If post-operative levels increase rather than decrease, the patient may suffer from distant metastasis, in particular, bone metastasis, as well as a poor prognosis.

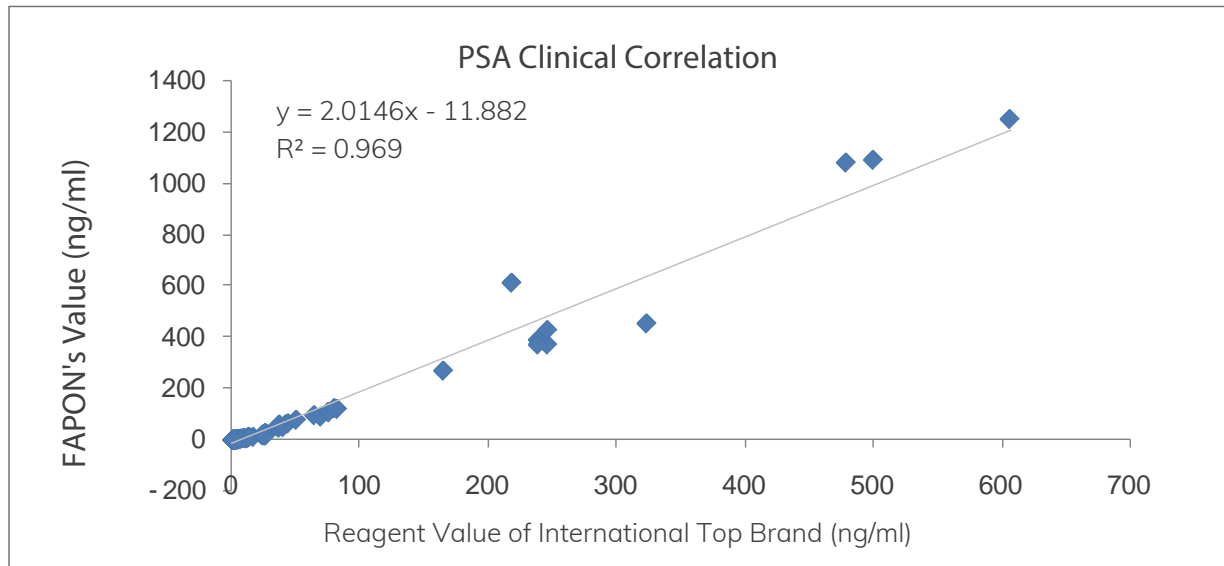
☆PSA Antibody

Antibody	BECPSAS103	BECPSAS101	BECPSAS102	BENPSAN101	BENPSAN102
Usage	Coating	Coating	Coating	Labeling	Labeling
Subtype	IgG1	IgG1	IgG1	IgG1	IgG1
Buffer	10mM PB + 150mM NaCl + 0.1% Proclin300, pH7.4				
Storage Condition	-20°C ± 5°C				
Shelf Life	3 years				
Purity	≥ 90%				

☆Recommended Pairing

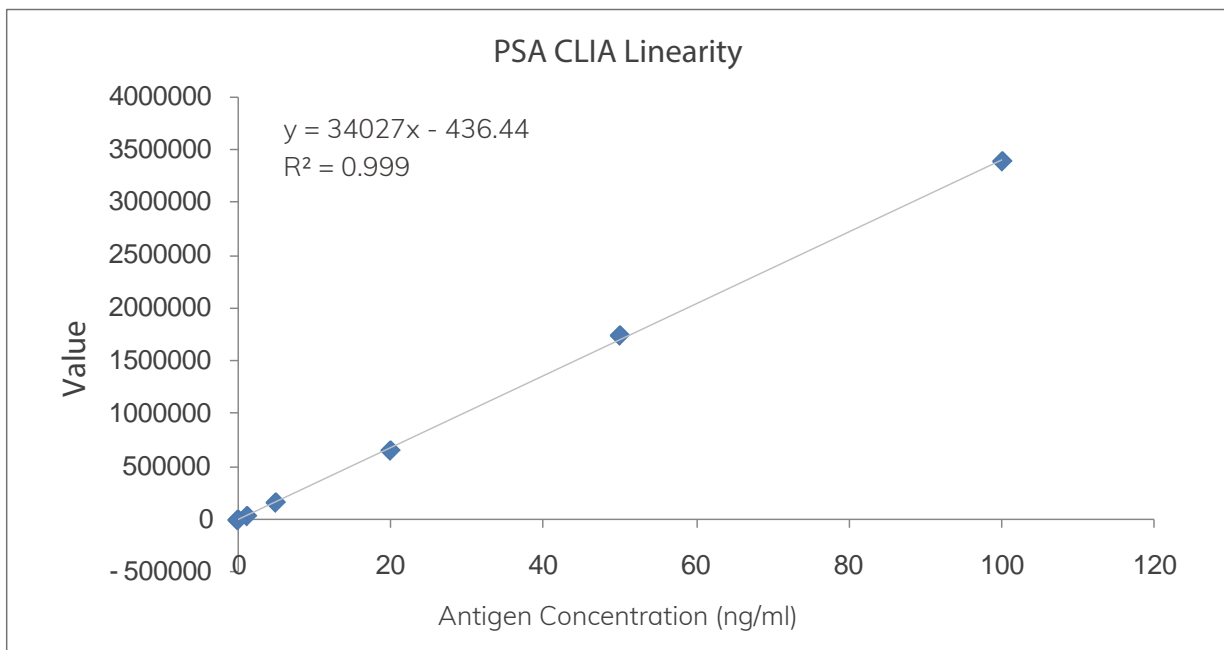
Catalog No.	Recommended Usage	Application Platform
BECPSAS103	Coating	ELISA/CLIA
BENPSAN101	Labeling	

☆Clinical Correlation



© Summary: There is an excellent linear correlation between Fapon's PSA and the reagent values of international top brand.

☆CLIA Linearity



© Summary: Fapon's PSA exhibits excellent linearity, with a linear range of 0.1-100 ng/ml and R^2 of 0.999.

FAPON



Fapon Biotech Inc.

📍 No.5 Hualian RD, Taiwan High - tech Industrial Park, Songshan Lake,
Guangdong, 523808 China

☎ +86 - 769 - 22898886

☎ +86 - 769 - 22898886 - 8800

✉ market@fapon.com

© RMTM - INMK - 201910



LinkedIn: [faponbiotech](#)