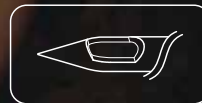


DISPOSABLE SPINAL ANESTHESIA NEEDLE (PENCIL POINT)

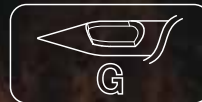
Our flagship product ensures both high security and performance.

When using a cutting spinal anesthesia needle, cerebrospinal fluid (CSF) flow from the puncture hole can induce postdural puncture headache (PDPH). A non-cutting pencil point needle allows rapid closure of the puncture hole to prevent PDPH. Our pencil point needles are highly rated for their user friendliness and excellent quality among doctors the world over.

Point Symbol Marks



Pencil Point



Pencil Point
(with Introducer Needle)

Features

● Unique opening shape and precise puncture resistance

Our original trapezoidal side hole is registered under #2112670 of the Practical New Ideas of the Japan Patent Office. This shape lets you securely feel the passage through the membrane and also helps achieve very rapid CSF flush back. The side hole located within 2mm from needle tip (except 22G) is efficient to prevent neuronixis.

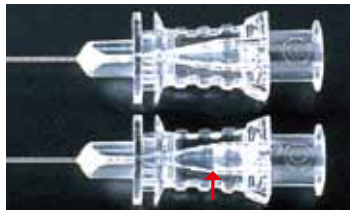
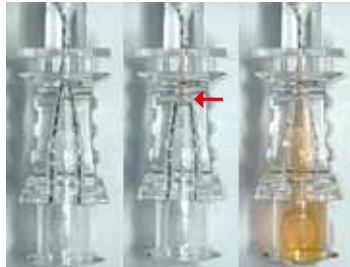
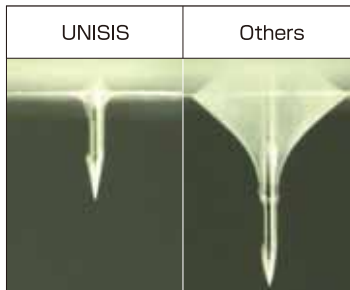
● Rapid flush back time

The shape of the side hole, the thin-walled tube, and the hub design work to provide unrivaled CSF flush back speed.

● Crystal-clear hub

The crystal-clear polycarbonate hub that allows easy recognition of CSF is molded in luer taper in conformity with ISO594-1. Our strict quality controls guarantee an extremely smooth fitting of stylet and hub to prevent needle wobbling.

Comparative image of film puncture



Needle points



Pencil point (conical-shape)

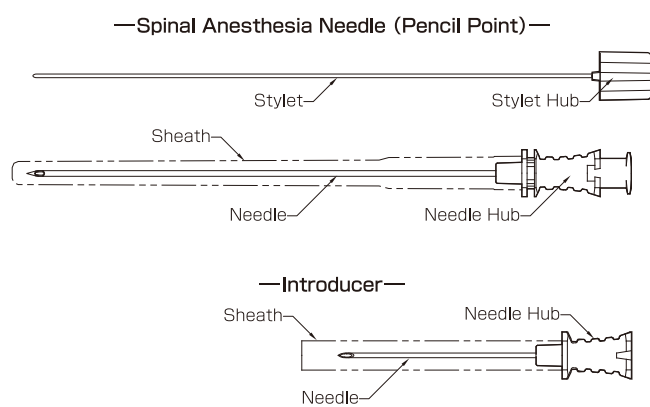
Unisis has improved the conventional Whitacre point. Our non-cutting conical-shaped design allows smoother puncture without cutting the dura. This enables quick closure of the puncture hole to minimize the CSF seepage, preventing PDPH incidents.



Pencil point (bullet shape)

Suitable for a blunter puncture to prevent nerve damage

Names of parts with sketches



Standard sizes

Product Name : UNIEVER DISPOSABLE SPINAL ANESTHESIA NEEDLE
Needle Point Type : Pencil Point (Modified "Whitacre" Type)

G:Gauge/ Color Code	Length	Introducer	REF(Code No.)
22G	90mm	—	2120471
24G	90mm	—	2130571
25G	90mm	20G38mm	5290761
26G	90mm	20G38mm	5300661
27G	90mm	22G38mm	5310761
29G	90mm	22G38mm	5320261

Individually packed and 25 pcs/box
E.O.G. sterilized

Manufacturer



7th Fl. Mitsui-Sumitomo Bank Okachimachi-Bldg. 4-11-4 Taito, Taito-Ku,
Tokyo, Japan 110-0016
(Direct call) International Sales Dept. Tel: +81-3-5812-8832 / Fax: +81-3-5812-8831

URL <http://www.unisis.co.jp/english/>

Made in Japan

Representative

Note : Product specifications are subject to change without prior notice due to product improvements, etc. SP090104E