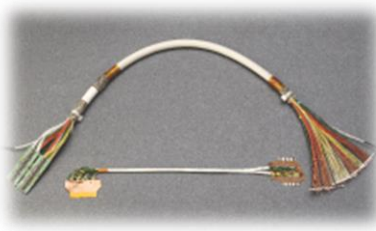
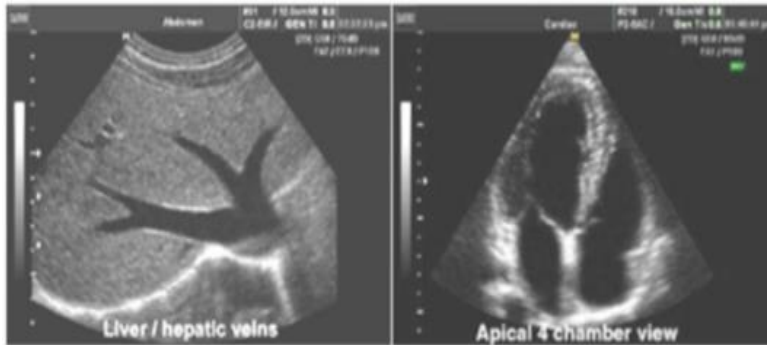


# Ultrasound Probe Cable Assembly

Medical ultrasound (also known as diagnostic sonography or ultrasonography) is a diagnostic imaging technique based on the application of ultrasound. It is used to see internal body structures such as tendons, muscles, joints, vessels, tumors, fetus and internal organs.

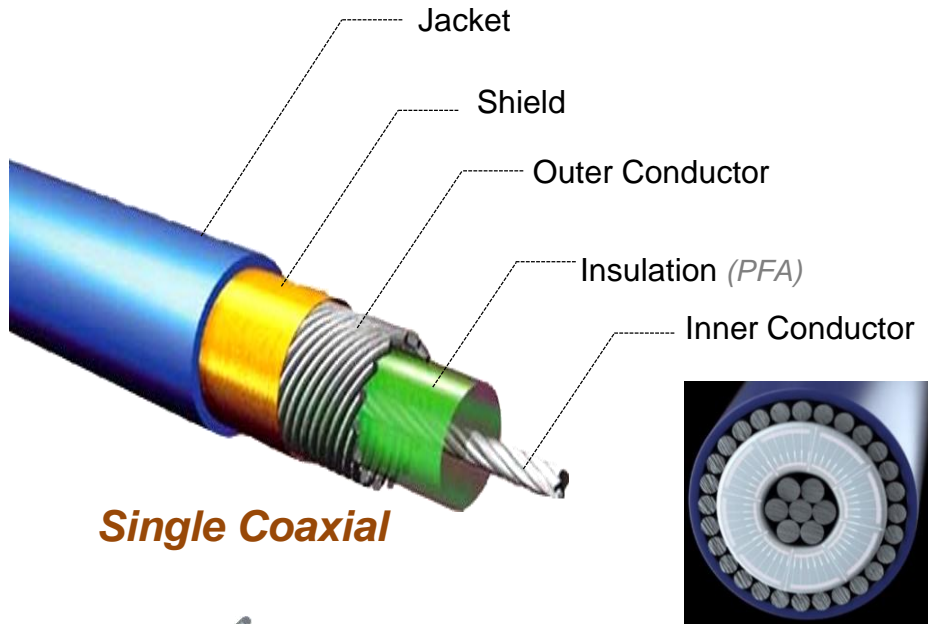


The Probe Cable is an essential part of the ultrasound imaging device. A bundle of extra fine coaxial cables are sophisticatedly processed to final technology-intensive assembly.

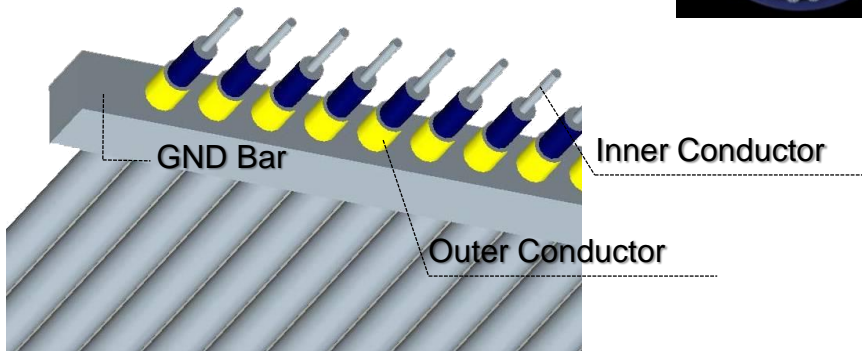


Through the creative development, 3C TAEYANG is producing about 200 kinds of Cable Assembly including 3D, Convex, Linear, Virginal and so on. We provide our products not only to the domestic market, but also to foreign Ultrasound makers

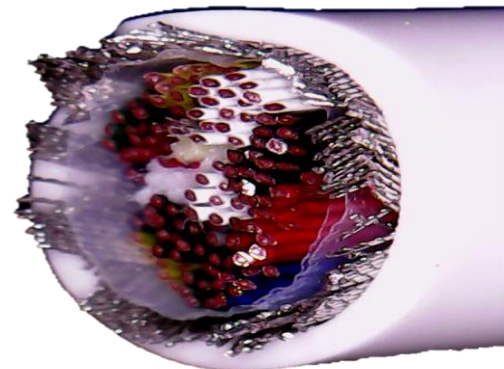
# Wire Harness Assembly Base – MCX(Micro Coaxial) Structure



3CTY has several different processing technologies for MCX cable in 36 AWG~48 AWG and 60pF~100pF in order to satisfy various customers.

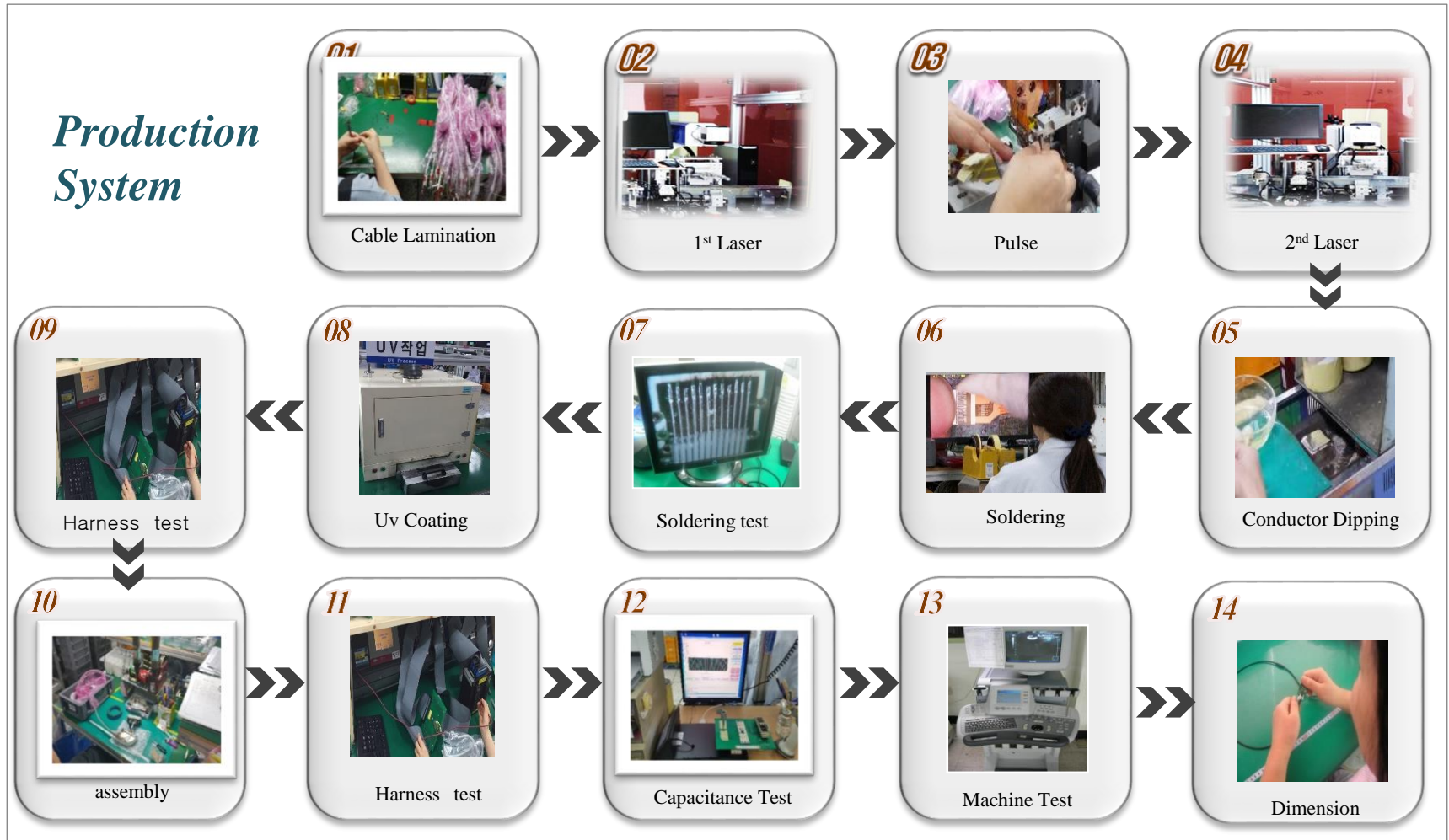


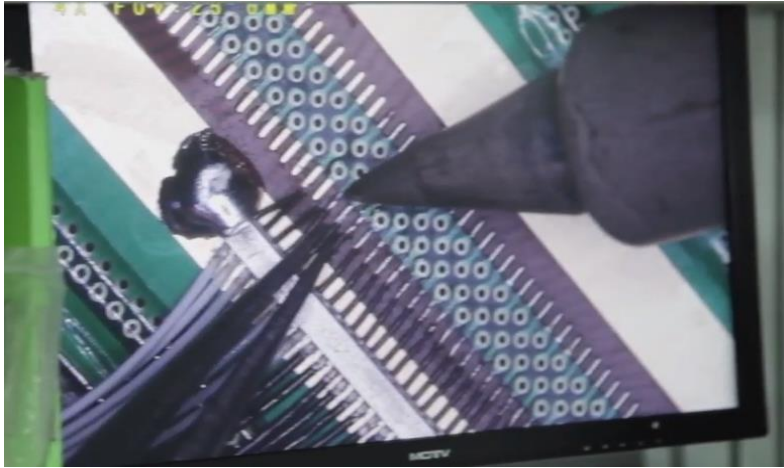
**GND Bar assembled**



# Production System

3C TAEYANG fulfills work standard, Fool-proof process, records of an individual quality education system, the complete enumeration test system, and the five-step quality control system complies with ISO Quality Manual.





3CTY is optimized for ultra-polarization and multi-channelization with over 35years of know-how and skillful technologies and perfect quality.