



Data Driven Health & Wellness

✉ info@Healthbot.com



Enhanced Self-Monitoring

Corporate Wellness:

- Drive Awareness
- Incentivize Healthy Behavior
- Measure Results

Clinical Settings:

- Optimize your workflow

Pharmacy:

- Intergrate into your medication management program

healthbot FEATURES

- Blood Pressure + Heart Rate
- Weight + BMI
- Internet Connectivity
+ Secure Data Transfers
- Barcode Reader *(Optional)*
- Printer *(Optional)*

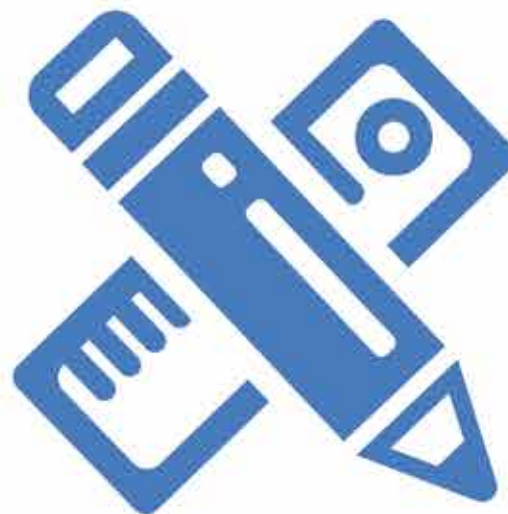


healthbot CONNECT

DATA: Where you want it.. when you want it.

- Personal-Health-Record retrievable on any Healthbot or at www.healthbot.com
- Secure data transfers to third party databases including popular EHR and Health & Wellness platforms
- Data aggregation with popular activity trackers and personal health devices via  VALIDIC
- Customized data reporting including usage reports and aggregate population reporting

SPECIFICATIONS



- Physical Dimensions:
Height: 63in Depth: 27.5 in
Width: 32 in Weight: 230 lbs
- Blood Pressure Accuracy: Meets ANSI/AAMI (Association for the Advancement of Medical Instrumentation) 81060-2:2009.
- Class II Medical Device Manufactured in FDA-Regulated Facility
- ISO 13485: 2003 Certified
- FDA 510K under model HCK-2000