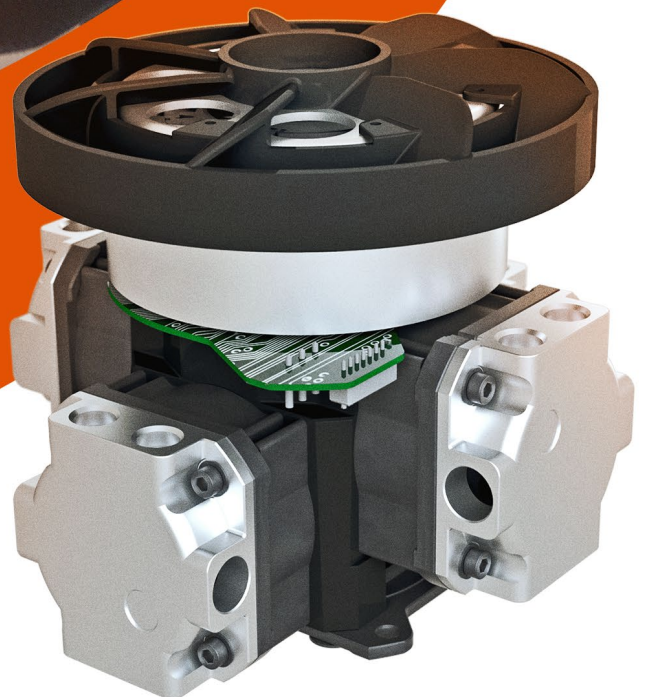


# ASPINA

Engineered to Inspire

## Technical Data Sheet 20L Compressor



[www.drive-system-medical-technology.com](http://www.drive-system-medical-technology.com)

## 20L Compressor

### Description


Low vibration level, compact and oil-less.  
Self-cooling fan for low temperature rise.

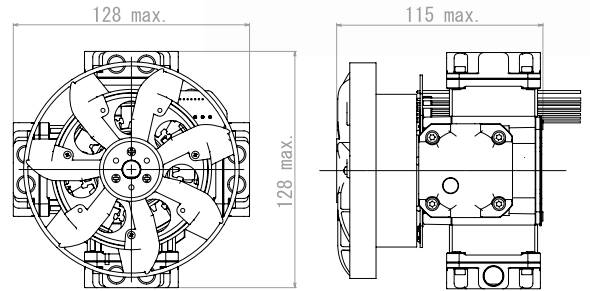
### Application

The compressor is e.g. suitable for use in Portable Oxygen Concentrator and Ventilator devices.



### Dimensions

Direction of rotation CCW 



Unit: mm

### Technical Data

#### Motor Specification

Type of Motor	DC	Brushless	
Nominal Voltage	V	24	
Speed Range	r/min	1000~2500	
Shaft Posture		Vertical	
Direction of Rotation	CCW		Viewing from rotor side
Ambient Temperature	°C	5~40	
Ambient Humidity	%RH	10~95	No condensation
Heatproof Temp of Coil	°C	105	
Atmospheric Pressure	hPa	700~1060	
Number of Phases		3	
Number of Poles		10	
Number of Slots		12	
Type of Bearing		Ball Bearing	

#### Rated Values

Rated Pressure	kPa(psi)	140(20)
Rated Flow	L/min	20
Rated Speed	r/min	2000

#### Mechanical Data

Weight of Compressor	kg	1.8
Acoustic Noise Level	dB(A)	60
Target Lifetime	hours	8500 Minimum

#### Electrical Data

Coil Resistance	Ω	0.12	20°C
Inductance	μH	195	20°C

### Electrical Connection

#### CN1 Motor Coil Connector Type: JST-VHR-3

AWG	PIN	Description
16	1	Coil 1
16	2	Coil 2
16	3	Coil 3

#### CN2 Sensor Connector Type: JST PAP 05V-S

AWG	PIN	Description
26	1	GND
26	2	Vcc
26	3	Hall 1
26	4	Hall 2
26	5	Hall 3

#### CN3 Thermistor Connector Type: JST PAP 02V-S

AWG	PIN	Description
26	1	TH
26	2	TH

