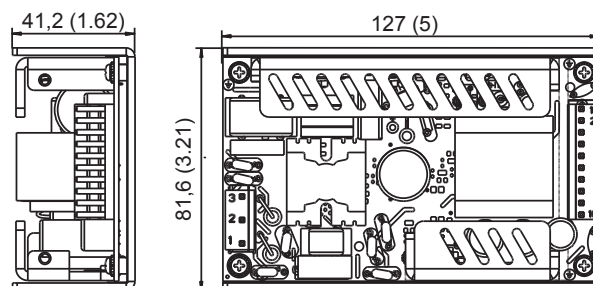


# OF150



Alle Abmessungen in Millimeter (Inch), Abweichung  $\pm 0,5$  (0.02)  
All Dimensions in Millimeter (Inch), Deviation  $\pm 0,5$  (0.02)

Voltage	Current	Ripple voltage	Article no.
24 V	6250 mA	$\leq 240$ mV pp	1893247

## Characteristics

- + Overload protection
- + Continuously short circuit proof
- + Overvoltage protection

## Labels / Certifications



Further approvals possible after consultation

## Technical data

Input voltage	100 – 240 V
Frequency	50 – 60 Hz
Input current	1800 – 800 mA
Earth leakage current	$\leq 500$ $\mu$ A
Touch current	$\leq 100$ $\mu$ A
Output voltage tolerance	$\pm 5$ %
Stand-by	$\leq 0.5$ W
MTBF	200.000 h*

## Environmental specifications

Operating temperature	-20 – 70° C
Humidity	95 % max.
Storage temperature	-20 – 85° C
Operating altitude	2000 m

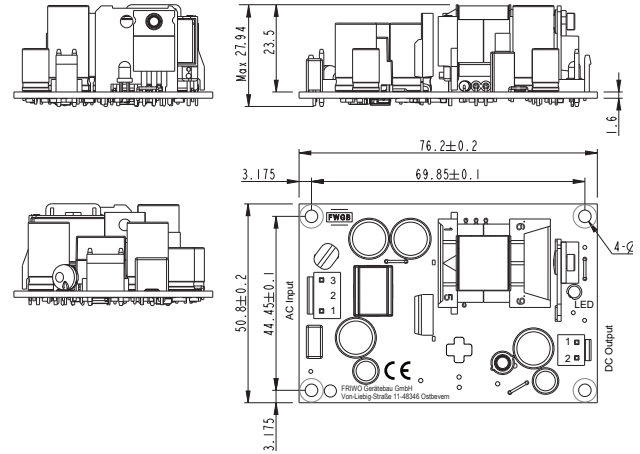
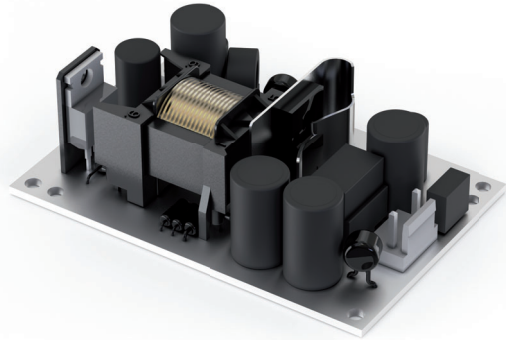
## Safety specifications

Layout acc. to safety standard	IEC 60601-1
Approvals	EU, US
EMC	EN 55035, EN 55032, EN 60601-1-2

## Mechanical data

Dimensions	127.0 x 75.4 x 35.0 mm (OF150 without U-bracket), 127.0 x 81.6 x 41.2 mm (OF150 with U-bracket)
Weight	240 g (OF150 without U-bracket), 340 g (OF150 with U-bracket)

# HERC18



Alle Abmessungen in Millimeter (Inch), Abweichung ± 0,5 (0.02)  
All Dimensions in Millimeter (Inch), Deviation ± 0,5 (0.02)

Voltage	Current	Ripple voltage	Article no.
5 V	3000 mA	150 mV pp	1899395
12 V	1500 mA	120 mV pp	1899396
15 V	1200 mA	150 mV pp	1899397
24 V	750 mA	180 mV pp	1899233

## Technical data

Input voltage	100 – 240 V
Frequency	50 – 60 Hz
Input current	400 – 200 mA
Earth leakage current	≤ 10 µA
Touch current	≤ 10 µA
Output voltage tolerance	+/- 5 %
Stand-by	≤ 0,075 W
	≤ 0,1 W (1899233)
MTBF	200.000 h*

## Environmental specifications

Operating temperature	-25 – 70 ° C
Humidity	95 % max.
Storage temperature	-40 – 85 ° C
Operating altitude	3000 m

## Safety specifications

Layout acc. to safety standard	IEC 60601-1, IEC62368-1
Approvals	EU, USA
EMC	EN 55032, EN 55024, EN 60601-1-2

## Mechanical data

Dimensions	76,4 x 51,0 x 27,94 mm
Weight	55 g

## Characteristics

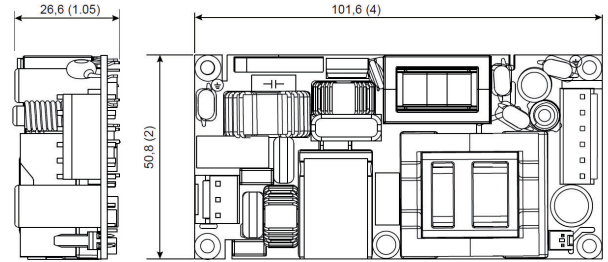
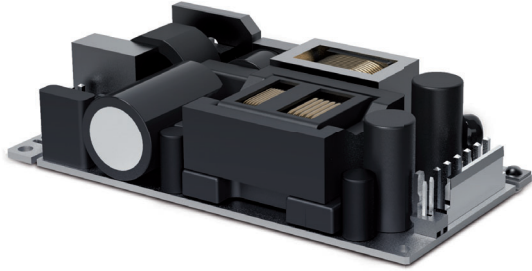
- + Overload protection
- + Continuously short circuit proof
- + Overvoltage protection

## Labels / Certifications



Further approvals possible after consultation

# HERC175



Alle Abmessungen in Millimeter (Inch), Abweichung  $\pm 0,5$  (0.02)  
All Dimensions in Millimeter (Inch), Deviation  $\pm 0,5$  (0.02)

Voltage	Current		Ripple voltage	Article no.
	CC*	FC		
24 V	5000 mA	7300 mA	240 mV pp	1899059

\*CC: Convection Cooling  
FC: Forced Cooling

## Characteristics

- + Overload protection
- + Continuously short circuit proof
- + Overvoltage protection

## Labels / Certifications



Further approvals possible after consultation

## Technical data

Input voltage	100 – 240 V
Frequency	50 – 60 Hz
Input current	1800 – 900 mA
Earth leakage current	$\leq 100 \mu\text{A}$
Touch current	$\leq 100 \mu\text{A}$
Output voltage tolerance	+/- 3 %
Stand-by	$\leq 0,21 \text{ W}$
MTBF	200.000 h*

## Environmental specifications

Operating temperature	-20 – 70° C
Humidity	95 % max.
Storage temperature	-40 – 85° C
Operating altitude	5000 m

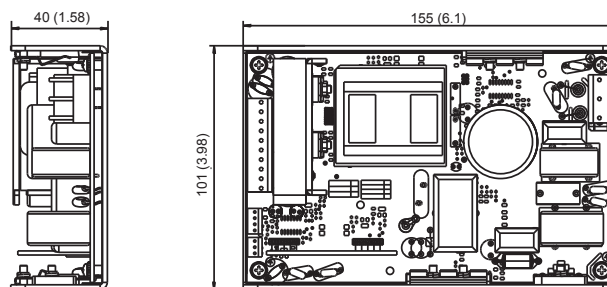
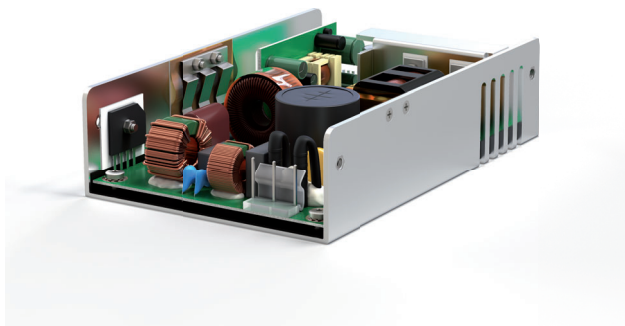
## Safety specifications

Layout acc. to safety standard	IEC 60601-1, IEC62368-1
Approvals	EU
EMC	EN 55035, EN 55032, EN 55024, EN 60601-1-2

## Mechanical data

Dimensions	101,6 x 50,8 x 26,6 mm
Weight	156 g

# OF250



Alle Abmessungen in Millimeter (Inch), Abweichung  $\pm 0,5$  (0.02)  
All Dimensions in Millimeter (Inch), Deviation  $\pm 0,5$  (0.02)

Voltage	Current	Ripple voltage	Article no.
24 V	10500 mA	$\leq 240$ mV pp	1891705

In approval

## Characteristics

- + Overload protection
- + Continuously short circuit proof
- + Overvoltage protection

## Labels / Certifications



Further approvals possible after consultation

## Technical data

Input voltage	100 – 240 V
Frequency	50 – 60 Hz
Input current	3500 – 1200 mA
Earth leakage current	$\leq 500$ $\mu$ A
Touch current	$\leq 100$ $\mu$ A
Output voltage tolerance	$\pm 5$ %
Stand-by	$\leq 1.0$ W
MTBF	200.000 h*

## Environmental specifications

Operating temperature	0 – 50° C
Humidity	95 % max.
Storage temperature	-20 – 85° C
Operating altitude	3000m

## Safety specifications

Layout acc. to safety standard	IEC 60601-1, 62368-1 (in Zulassung)
Approvals	EU, US
EMC	EN 55035, EN 55032, EN 60601-1-2

## Mechanical data

Dimensions	155.0 x 101.0 x 40.0 mm
Weight	600 g