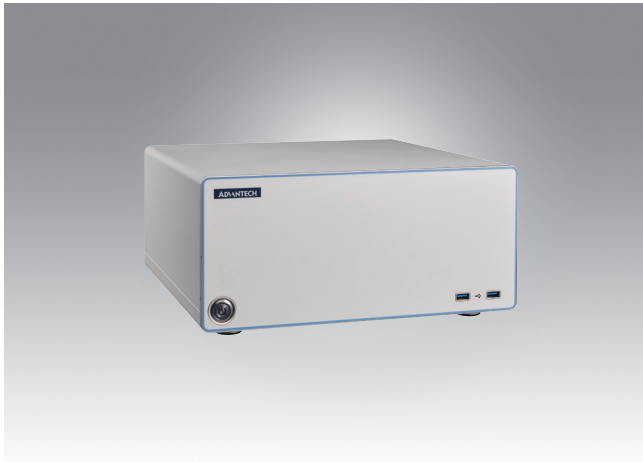


# AVAS-402

## Medical VMS/Recorder and Computing Platform



### Features

- Multi channels are supported to record 4K and FHD medical videos simultaneously
- H.265 recording technique enables to save high quality video while conserving storage capacity
- Video source can be previewed with 4Kp60 to make medical video accessible
- An open SDK and API enable user to integrate the product into environment or workflow management system
- Supports windows 10/Linux Kernel, CE/FCC/EN60601-1/UL-60601-1/CCC Certifications
- Support windows video recording and video management software
- Supports Intel® Xeon® 8th Gen Core™ i7/i5/i3 processor with Q370/C246/H310 chipset
- Supports Software RAID 0,1,5,10, TPM 1.2/2.0 (optional)

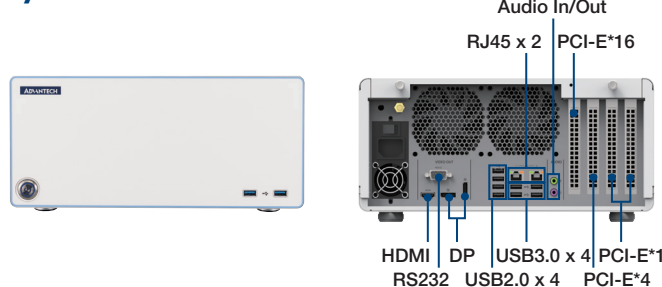
### Specifications

Video	Input Resolution (Capture Card)	Up to 4K UHD (4096 x 2160)
	Output Resolution (Graphic Card)	Up to 4K UHD (4096 x 2160)
	Compression Format	MPEG2, H.264, H265
Audio	Audio	2 (Mic-in/ Line-out) (Mic-in could be configured as "Line-in" under Win OS.)
System	CPU	Intel E-2176G / i7-8700 / i5-8500 / i3-8100
	Memory	16G
	HDD	1T
I/O	Capture I/O	4Kp60: HDMI 2.0 in FHD (max): Y/PbPr, CVBS, S-Video, SDI, HDMI, DVI-I (can be optional)
	Video Display I/O	DVI, Display Port, HDMI (can be optional)
	Ethernet	RJ-45 x 2
	Usb Host	16 (4 x USB3.1, 4 x USB3.0, 8 x USB2.0)
	Audio Out/In	2 for Audio out/in 3.5mm stereo jack connectors
	Rs232	RS-232 x 1
Power		Internal PSU,100~240V AC in
Certification		FCC, UL 60601, CE EN60601, CB EN60601, MDD, CCC
Environmental	Operation Temperature	0 °C to +40 °C
	Storage Temperature	-10 °C to +50 °C
Dimension & Weight		320 x 329 x 145 mm, 10Kg
SDK Main Function		Streaming control, capture, recording, streaming, playback, editing, tools

### Ordering Information

Part Number	Description	CPU	Memory	HD	GPU	Capture Card
AVAS-402-MVAB-0A00	Recorder/4Kp60-HDMI/FHDp60-SDI, DVI-D, DVI-A/i7	i7-7700	16GB	1TB-HDD	GTX1650	2ch, 4Kp60-HDMI, FHDp60-SDI, DVI-D, DVI-A
AVAS-402-MVAB-0A01	Recorder/4Kp60-HDMI/i7	i7-7700	16GB	1TB-HDD	GTX1650	1ch, 4Kp60-HDMI
AVAS-402-MVAB-0A02	Recorder/FHDp60-SDI, DVI-D, DVI-A/i7	i7-7700	16GB	1TB-HDD	GTX1650	1ch, FHDp60-SDI, DVI-D, DVI-A
AVAS-402-XNAB-0A00	BoxPC/i7/1TB-HDD/16GB	i7-7700	16GB	1TB-HDD	-	-
AVAS-402-XNAB-0A01	BoxPC/i7/1TB-SSD/16GB	i7-7700	16GB	1TB-SSD	-	-

### I/O



### Optional items

Part Number	Description
AVAS-OPAC-2001	Graphic-Nvidia GTX1650 4G PCIEX16
AVAS-OPAC-2004	Capture-HDMI 4K/DVP-7011UHE
AVAS-OPAC-2005	Capture-1ch SDI, DVI, YPbPr/DVP-7611HE
AVAS-OPAC-2006	Capture-2ch DVI, YPbPr/DVP-7021HE
1702002600	Power Cord UL 3P 10A 125V 183cm
1702002605	Power Cord EU 3P 10A 250V 183cm