



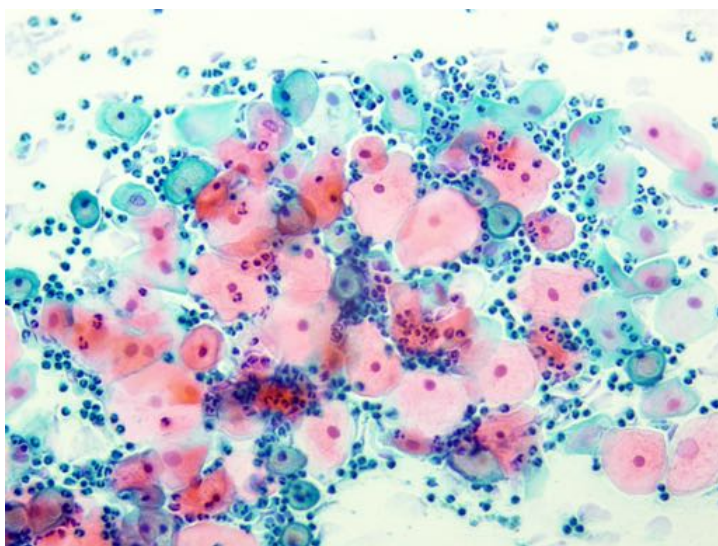
MLT Staining devices

FAST, COMPACT, VERSATILE & ECONOMICAL

FOR HEMATOLOGY - MICROBIOLOGY - CYTOLOGY - HISTOLOGY

The dip staining method







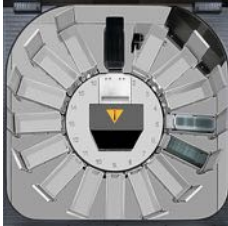

The staining devices were developed to perform the most common staining techniques for medical specimens in an automated manner using the dipping method. The cuvettes and the functional stations are controlled by the individually programmable movements of the slide holders. The slide holder can move horizontally and vertically for this purpose. To protect against contamination of the staining solutions and escaping vapors, the working chamber is equipped with a lid and is ventilated via a carbon filter. This ensures safety when handling toxic reagents and prevents unpleasant odors. To remove superfluous liquid from the slides, the slide holders vibrate as they rise from the liquid. Carryover of staining solutions between the cuvettes can thus be significantly reduced. The technology is simple, reliable and enables reproducible staining results.



Special Features:

- Staining by the dipping method
- Reduced carryover due to vibration function
- Lid with carbon filter prevents emission of toxic and unpleasant vapors
- Simultaneous performance of different staining methods
- Also complex staining methods like Papanicolau staining (PAP) are programmable

Summary FS Fastainer - dip staining method

	FS-9-25	FS-12-25	FS-16- COMBO	FS-16-HISTO
General view				
Working chamber				
Number of stations	9	12	16	16
Combined stations	7	10	14	15
Flow-through stations	+ (with water supply)			
Heating stations	+ (with hot air, adjustable temperature from +40 °C to approx. +60 °C)			-
Blotter	-	+	-	-
Primary application	Haematology, microbiology, parasitology	Cytology (e.g. Pap-test), Haematology, microbiology, parasitology	Histology (e.g. H & E), Cytology (e.g. Pap-test), Haematology, microbiology, parasitology	Histology (e.g. H & E), Cytology (e.g. Pap-test)
Performance, slides per hour	≤ 150 for Pappenheim staining (MGG)	≤ 100 for PAP-Test	≤ 100 for H&E, ≤ 150 for PAP-Test	≤ 150 for H&E, ≤ 150 for PAP-Test
Dimensions in mm	530 × 460 × 330	530 × 580 × 330	610 × 580 × 330	610 × 580 × 330
Weight in kg	18	22	25	25
Power supply	230 V / 50 Hz / 400 VA			

Further common equipment features of the automatic stainers FS-9 to FS-16:

- Empty spaces can also be equipped with prepared slide holders
- Up to 25 slides possible in one slide holder
- 210 mL reagent volume per cuvette (100 mL when equipped for 10 slides)
- Control and monitoring via 4.3" color TFT display with resistive touch screen
- Programming of up to 32 staining programs also possible with the PC
- Maximum of 30 programming steps possible per staining method, each step can be freely selected