



Ultra-fast, mobile molecular Point-of-care platform using SNAAT[®] technology.

Genomtec[®] ID is a revolutionary molecular diagnostics platform with a compact footprint that healthcare professionals can easily use to identify infectious disease pathogens accurately in the shortest time-to-result, near the patient in a point of care (POC) environment.

Its microfluidic lab-on-chip platform is empowered by our proprietary method of detection - Streamlined Nucleic Acid Amplification Technology (SNAAT[®]) that utilizes isothermal chemistry and a patented contactless optical heating and detection system for detection of DNA/RNA fragments.

Multiple benefits

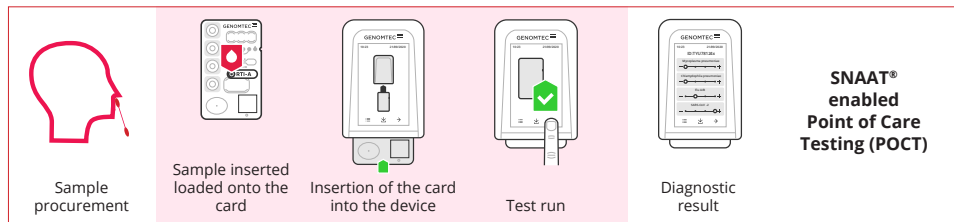
- Fast and Accurate diagnostics in **minutes**
- Compact footprint makes it possible to bring diagnostic laboratory **near-patient**
- Easy to use, automated process makes it simple for use by any **healthcare personnel**
- Actionable results that immediately inform prescriptions, **reducing visits and healthcare costs**
- Identification that is powerful in the fight against **Antimicrobial Resistance (AMR)**

INNOVATION THROUGH SNAAT®

Genomtec® ID platform offers true POC testing

The ground-breaking SNAAT® technology allows for integration of the whole diagnostic process onto one platform, automating the most cost and time-consuming analytical phases of the process.

The microfluidic reaction card fully automates the entire process of sample preparation, nucleic acid purification and concentration with isothermal nucleic acid detection of up to five pathogenic targets simultaneously.



GENOMTEC® ID RESPIRATORY PANEL 5-PLEX

- Influenza A/B
- Respiratory Syncytial Virus (RSV)
- SARS-CoV-2
- *Mycoplasma pneumoniae*
- *Chlamydia pneumoniae*

Unmatched clinical utility

Eliminate the guesswork of COVID-19 infection from other commonly circulating pathogens causing similar symptoms.



Versatility of testing

Permits use of different types of samples such as swab or saliva to identify a range of viral and bacterial pathogens.



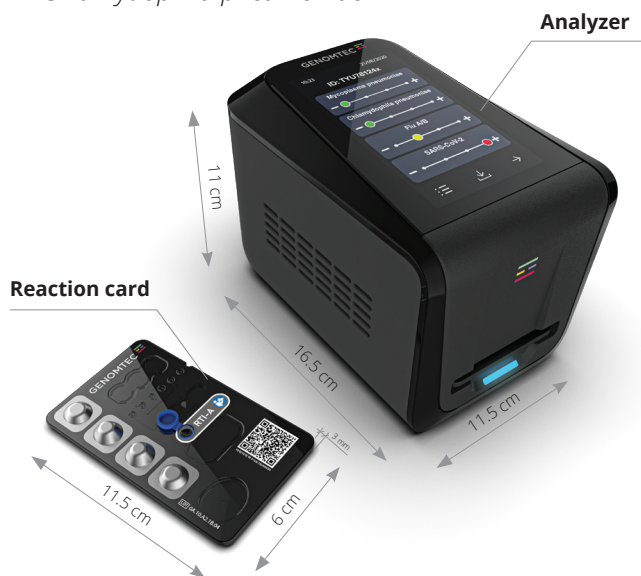
Multiplexing

Identify 5 pathogens on one reaction card that are responsible for the most common respiratory tract infections.



Rapid diagnosis

Short time-to-result of approximately 25 mins.



Genomtec® ID Analyzer and Genomtec® ID Respiratory Panel are currently under development.

To obtain additional information, discuss distributorship opportunities or investment, please contact us at: sales@genomtec.com

Genomtec SA, Stablowicka 147, 54-066 Wrocław, Poland

www.genomtec.com

All associated marks are trademarks of Genomtec S.A. All other trademarks and brands are the property of their respective owners. Product availability may vary from country to country and is subject to varying regulatory requirements. Please contact your local representative for availability.